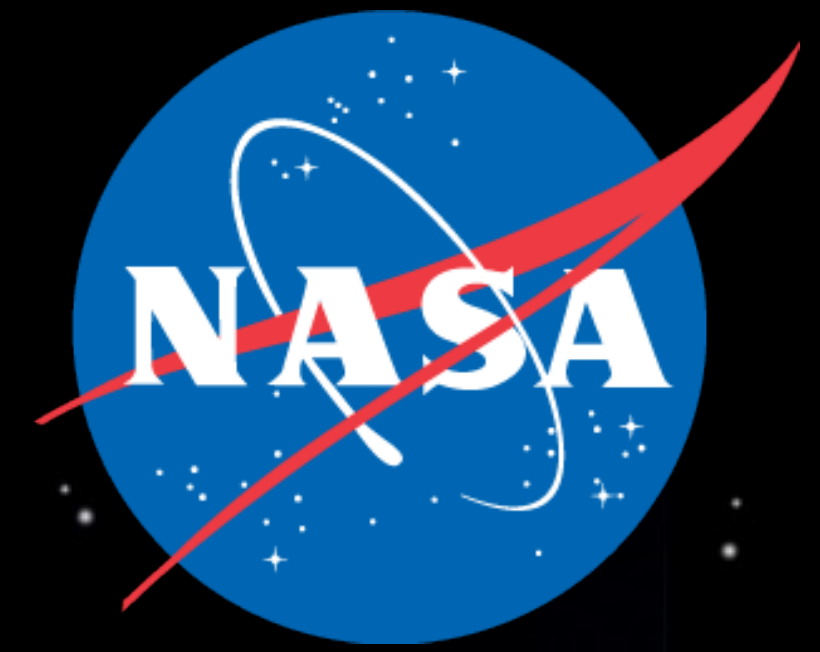


# ABOVE

ARCTIC - BOREAL VULNERABILITY EXPERIMENT



Peter B. Kirchner, Ph.D.<sup>1</sup>, Peter C. Griffith, Ph.D.<sup>2</sup>

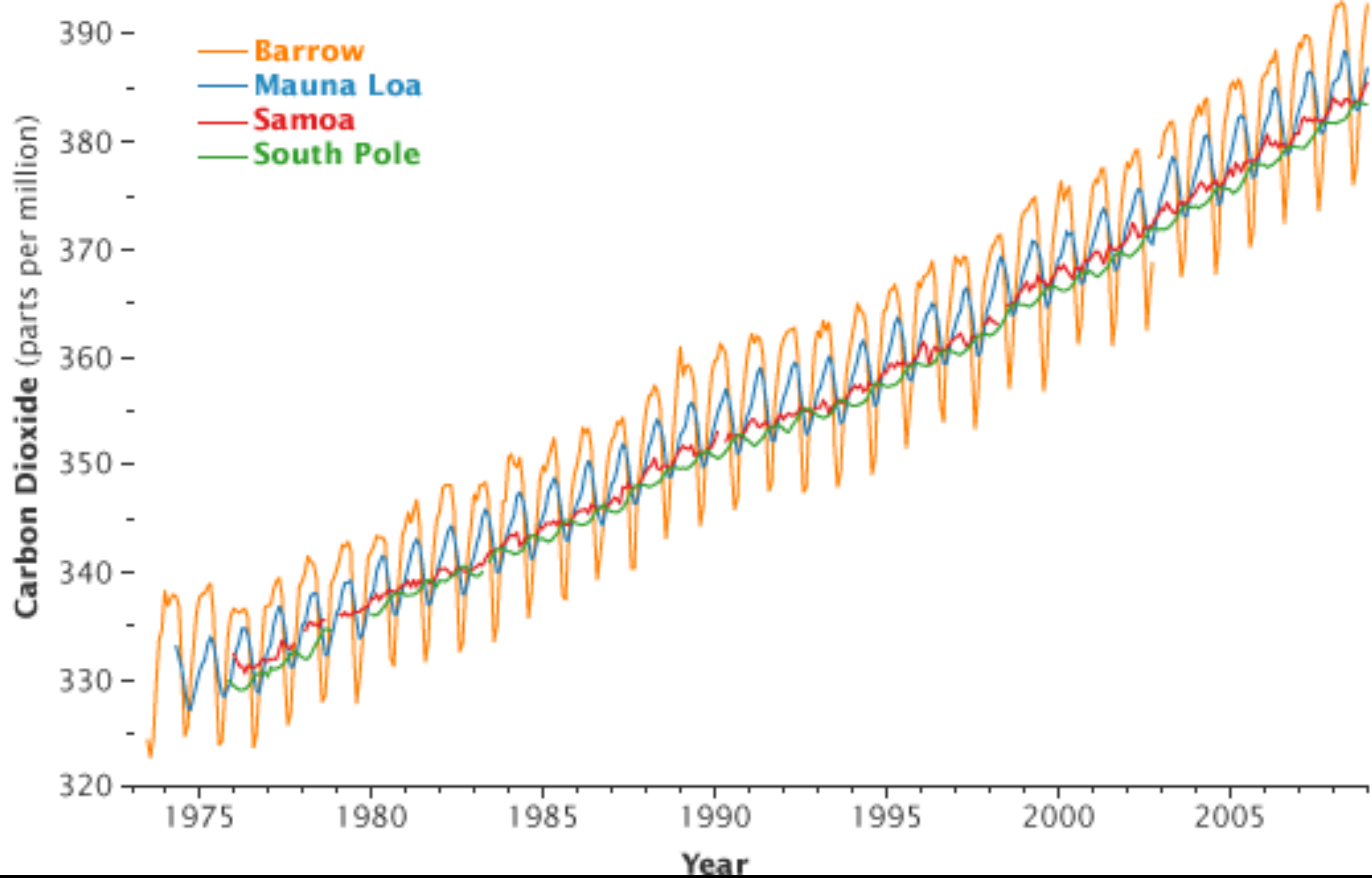
<sup>1</sup> National Park Service, Southwest Alaska Network

<sup>2</sup> NASA Carbon Cycle & Ecosystems Office

Twitter @NASA\_ABoVE

Facebook @NASA.ABoVE



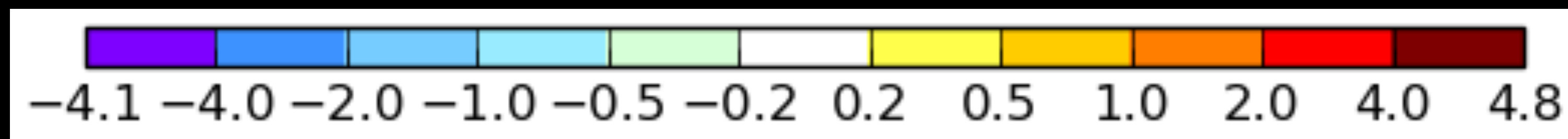
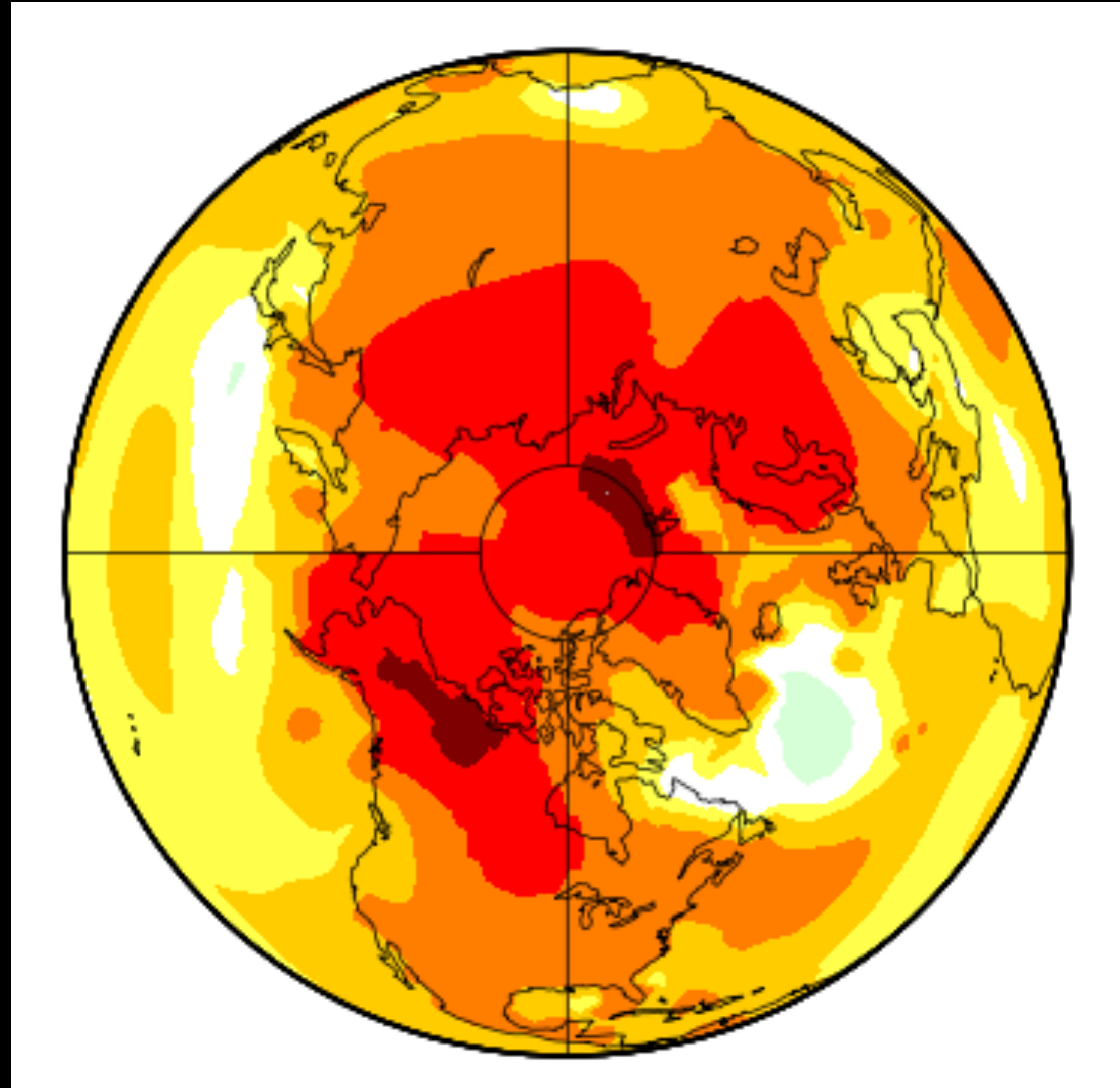






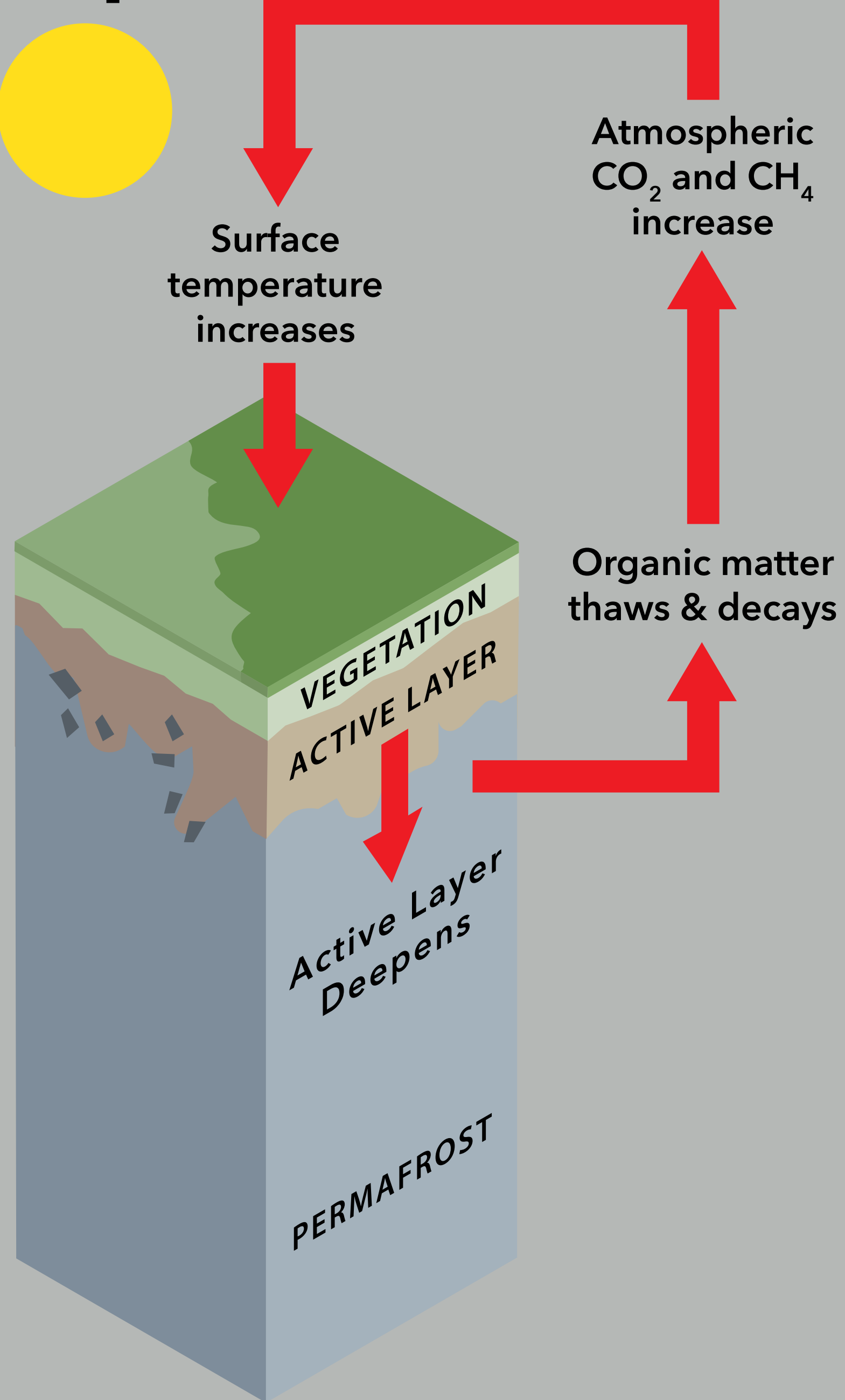


# 5- year Dec-Jan-Feb Temperature Anomaly vs 1951-1980





# Impacts and feedbacks to local, regional, and global systems





# VULNERABILITY-RESILIENCE FRAMEWORK

Causes of Change



DRIVERS



Changes to Ecosystems

RESPONSES

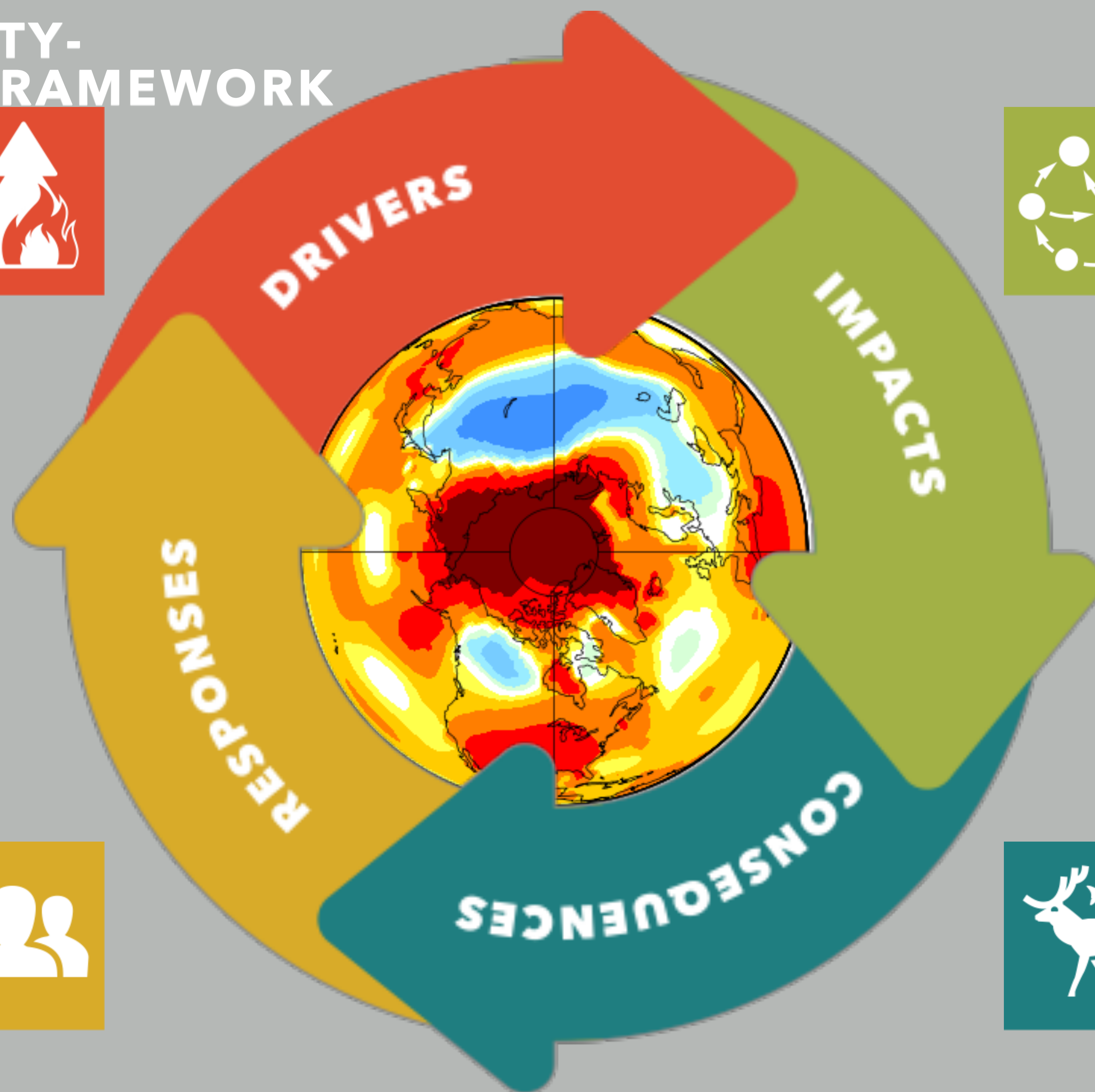


Social Systems

CONSEQUENCES



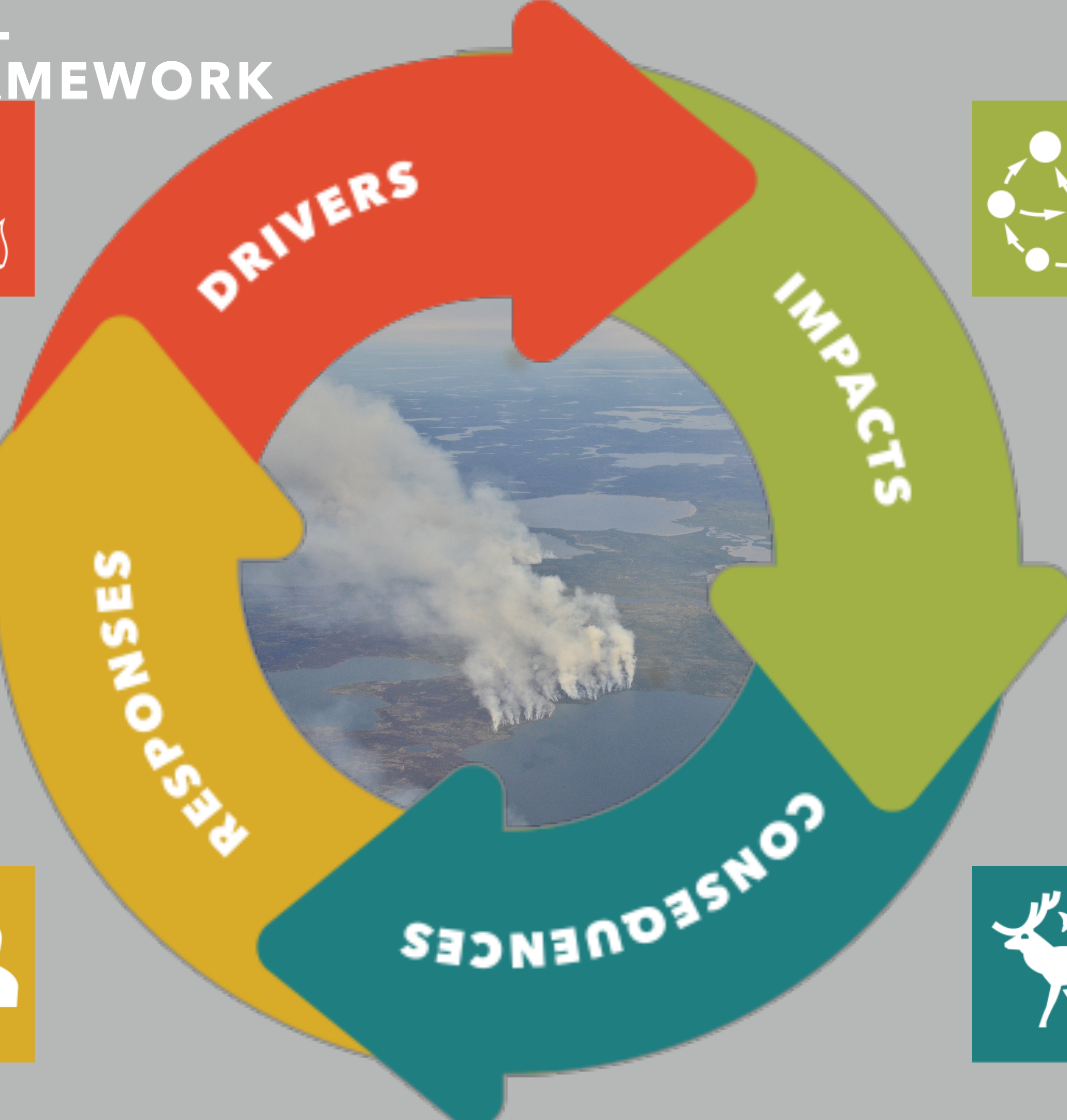
Ecosystem Services





# VULNERABILITY-RESILIENCE FRAMEWORK

Causes of Change



Changes to Ecosystems

Social Systems



Ecosystem Services



# VULNERABILITY-RESILIENCE FRAMEWORK

Causes of Change



DRIVERS



Changes to Ecosystems

RESPONSES



Social Systems

CONSEQUENCES



Ecosystem Services



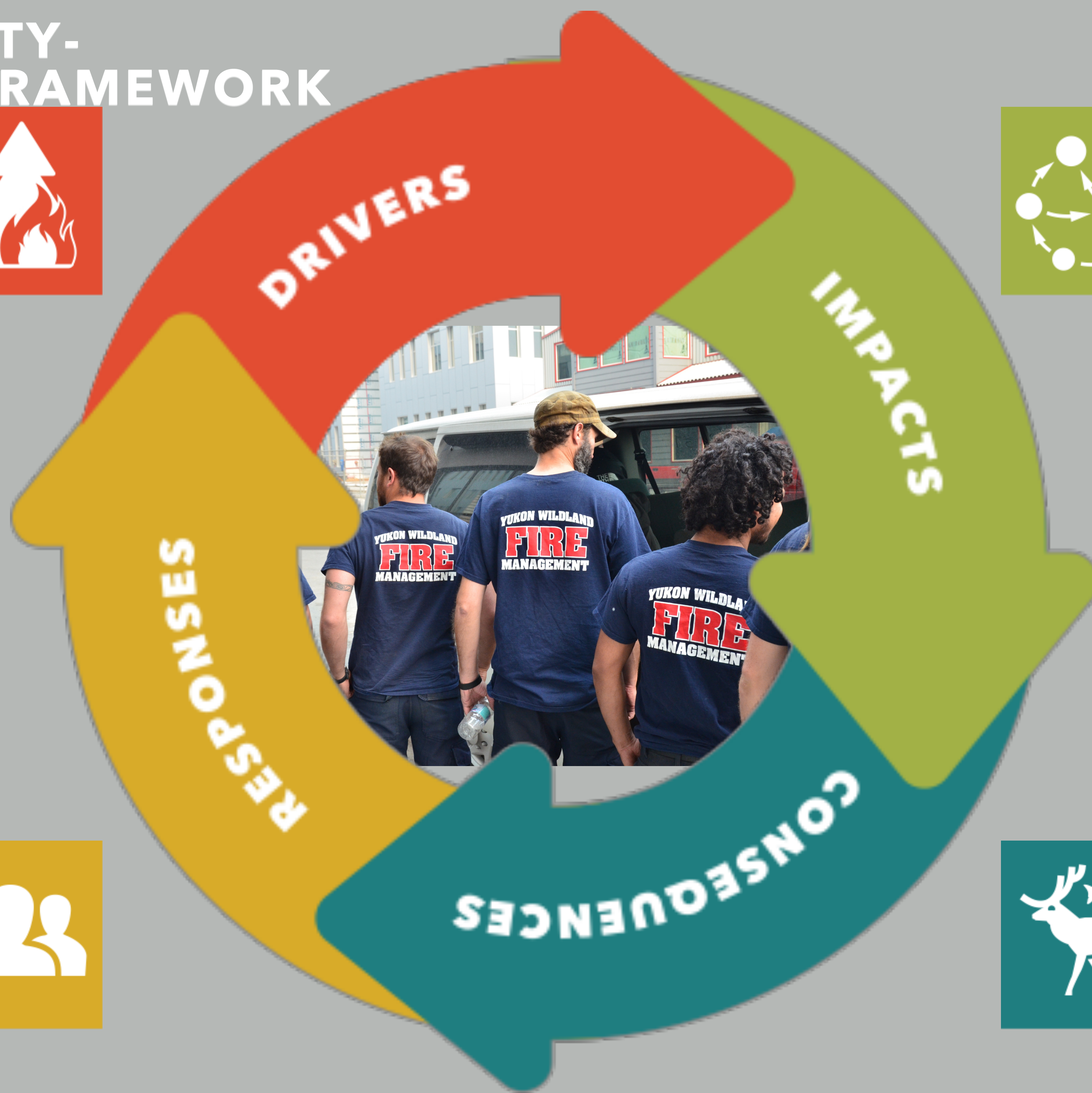


# VULNERABILITY-RESILIENCE FRAMEWORK

Causes of Change



Changes to Ecosystems



Social Systems



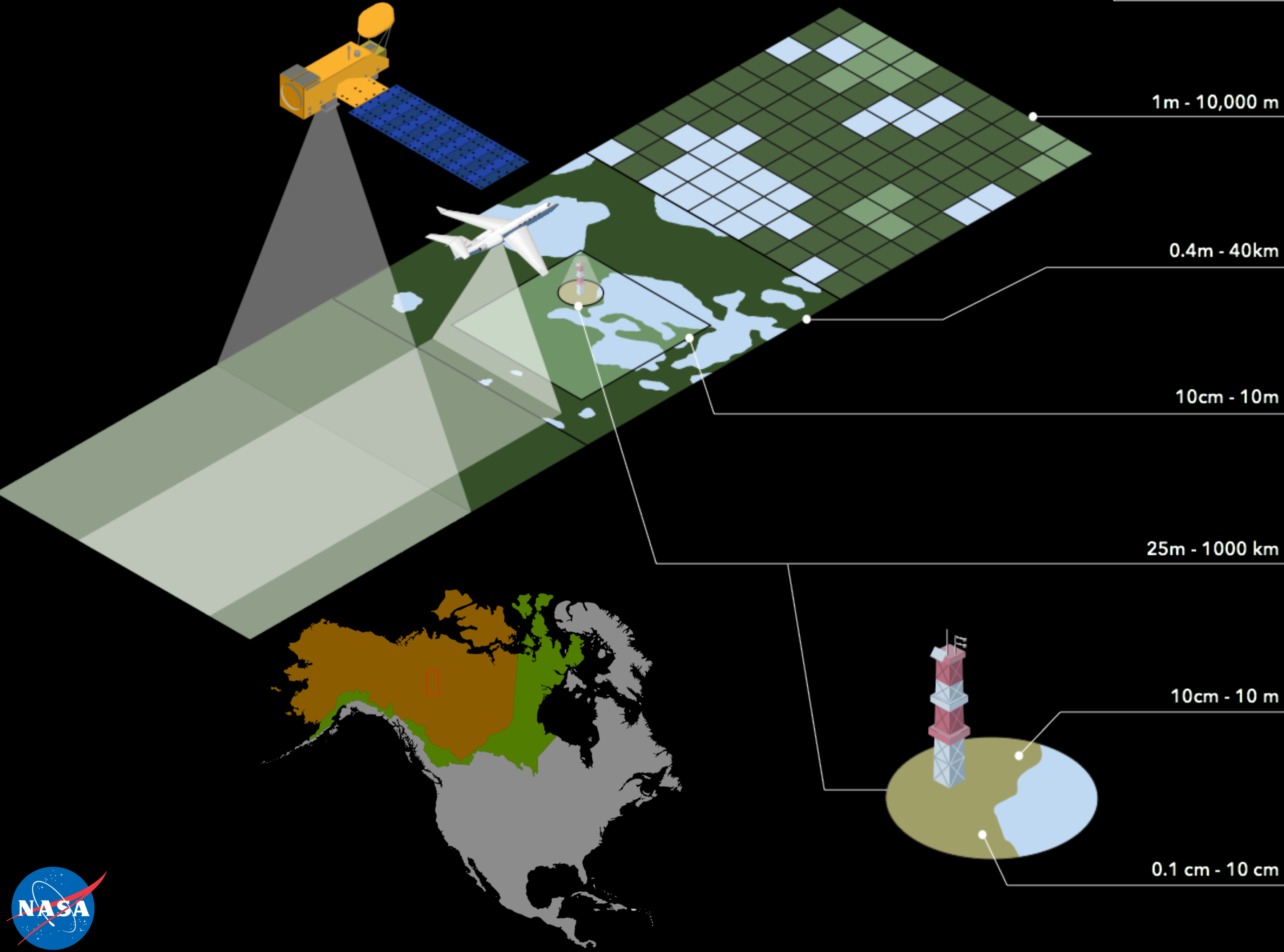
Ecosystem Services



# SCALING STRATEGY

RESOLUTION

DISTANCE



1011010100  
01001001001  
11010101011  
11010001110  
10010100100  
10010010101

MODEL

ORBITAL

~700 km

AIRBORNE

High Altitude: ~10,000 m - 20 km  
Mid Altitude: ~2,000 m - 5 km  
Low Altitude: ~300 m

TOWER

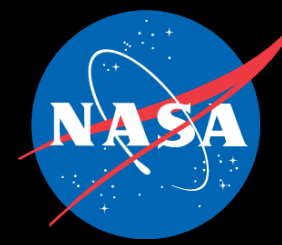
<50 m

PLOT

<5 m

LEAF LEVEL

<<1 m







Chukchi  
Sea

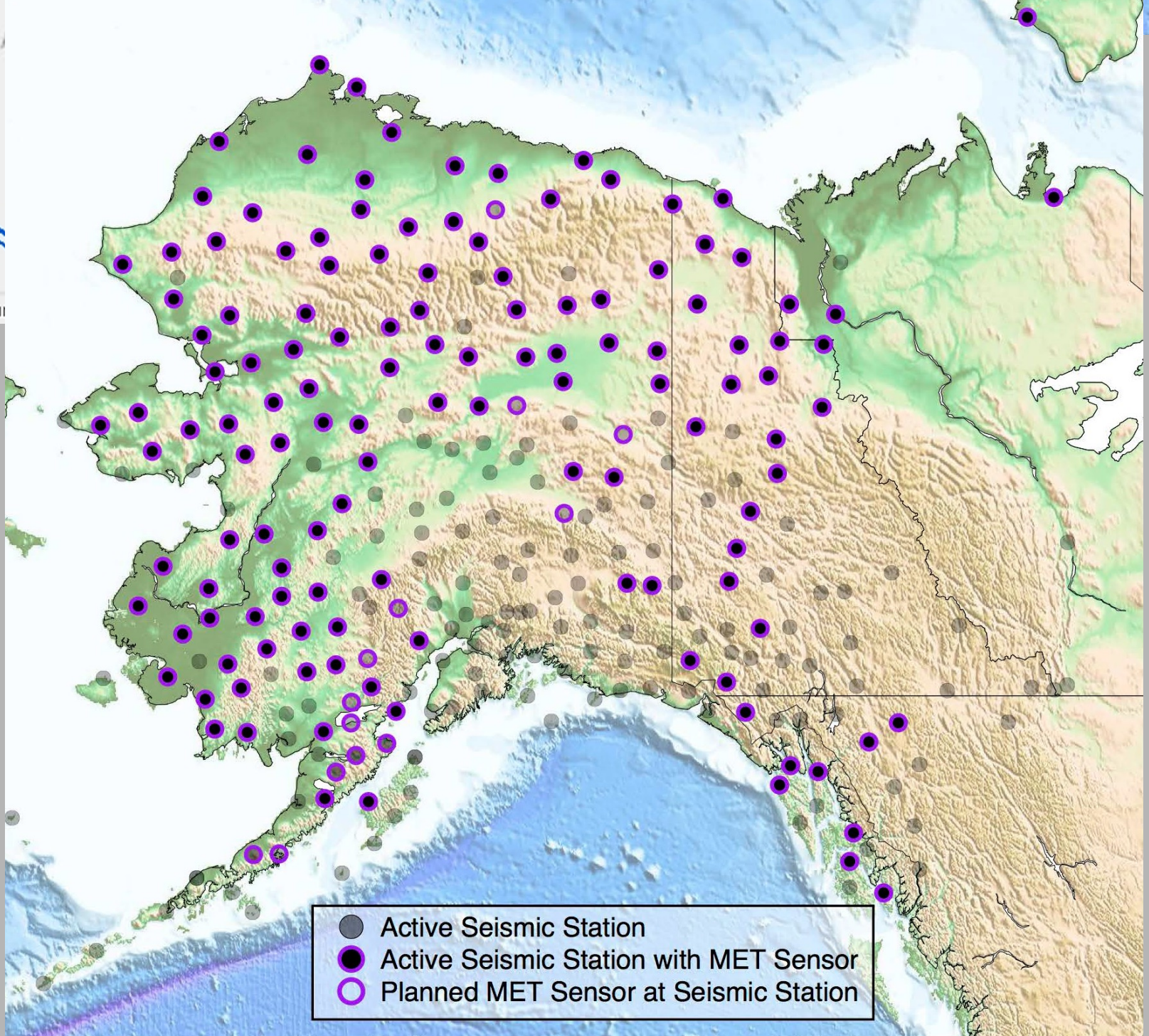
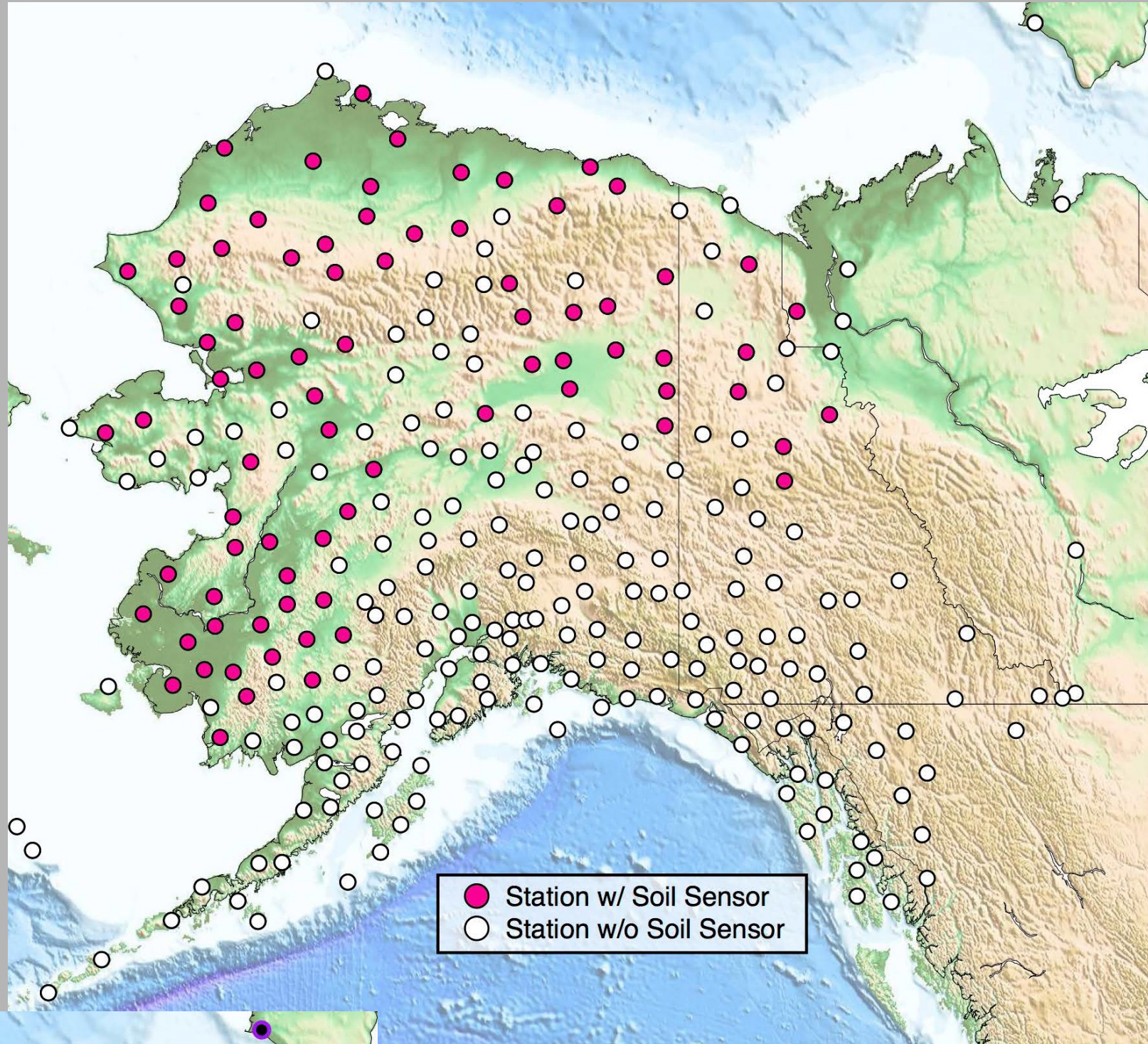
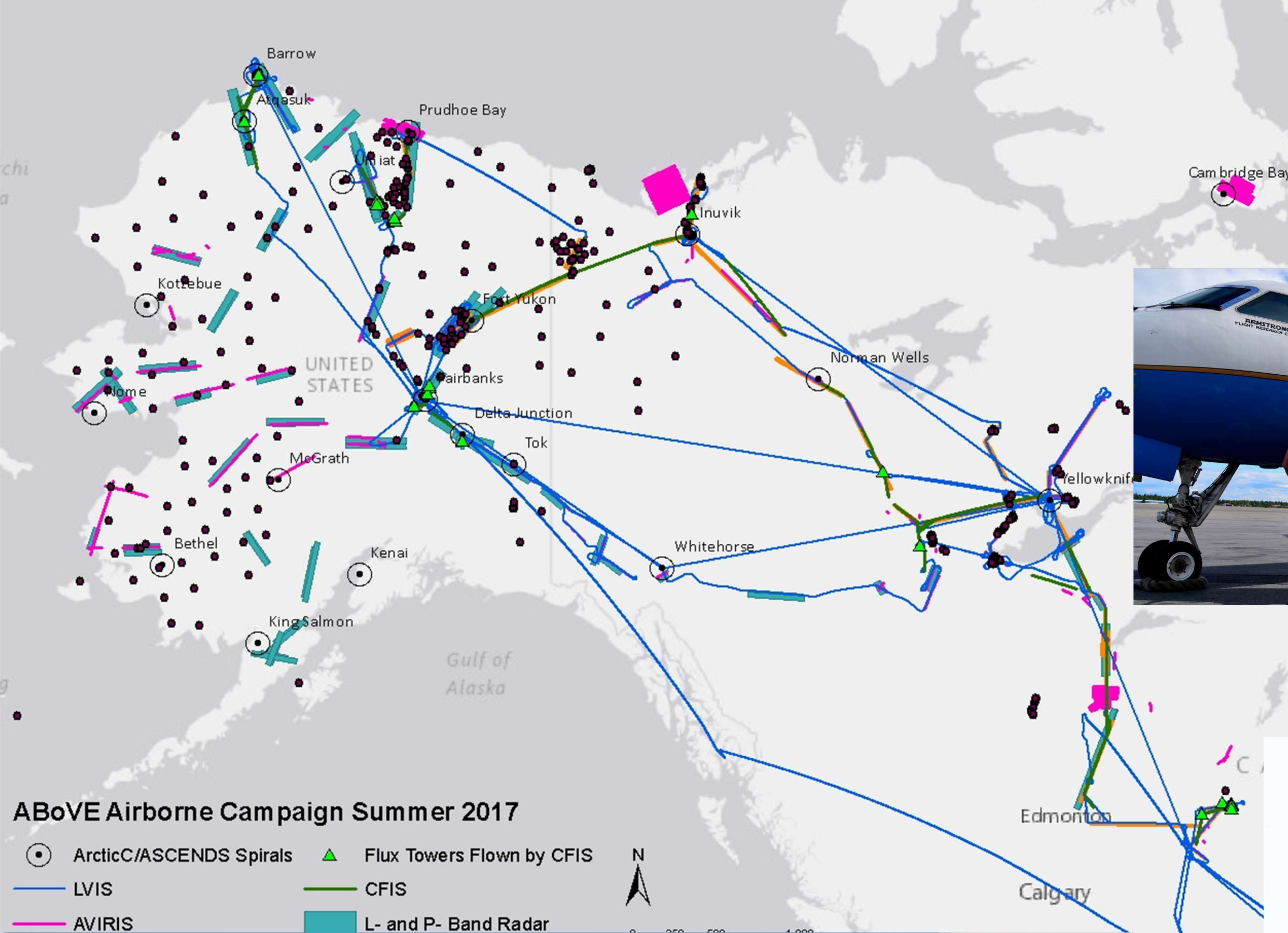
Bering  
Sea

Hudson  
Bay

Gulf of Alaska

Photo: Jeff Masek, Junchang Ju, Cindy Starr NASA GSFC

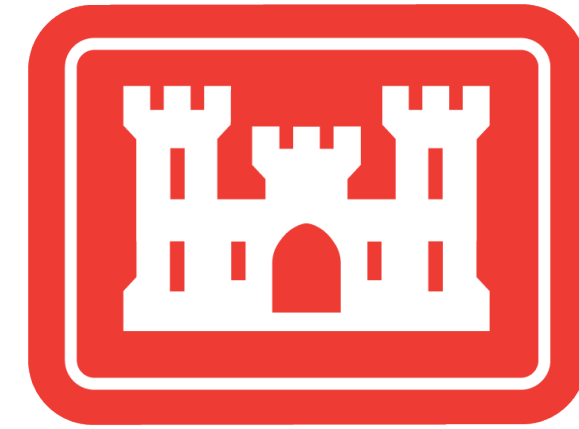
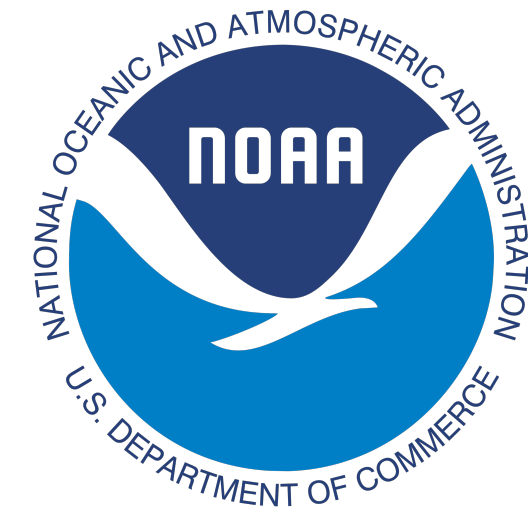




**Alaska  
Transportable  
Array  
meteorologic and  
soil sensors  
supported by  
NASA ABoVE**



# US and Canadian Partners are Essential to ABoVE's Success



56 US Universities/ Research Institutes  
9 Federal Agencies  
2 State/ Provincial/ Territorial  
10 Private  
1 Native/ Aboriginal Organizations

379. US Science Team Members  
58 NASA Funded Projects  
6 US Non- NASA Funded Projects



Questions?

