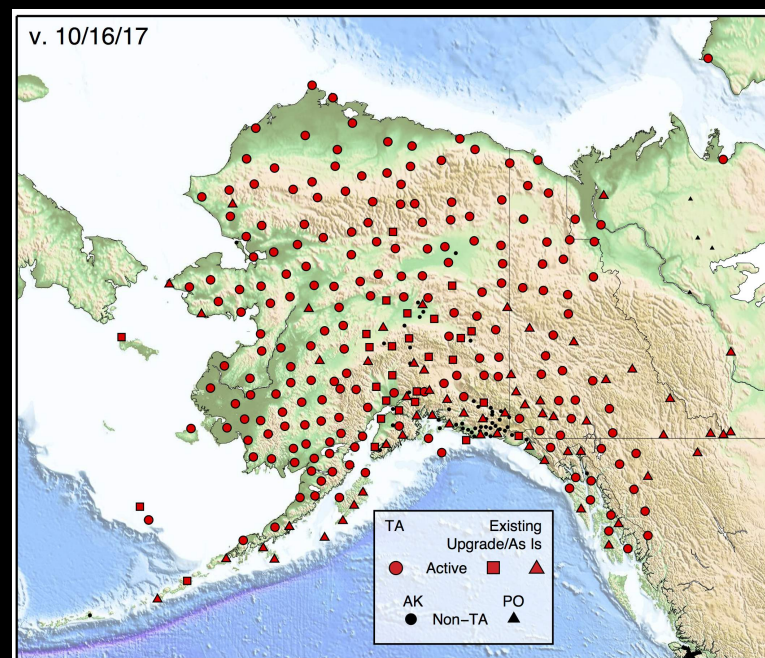
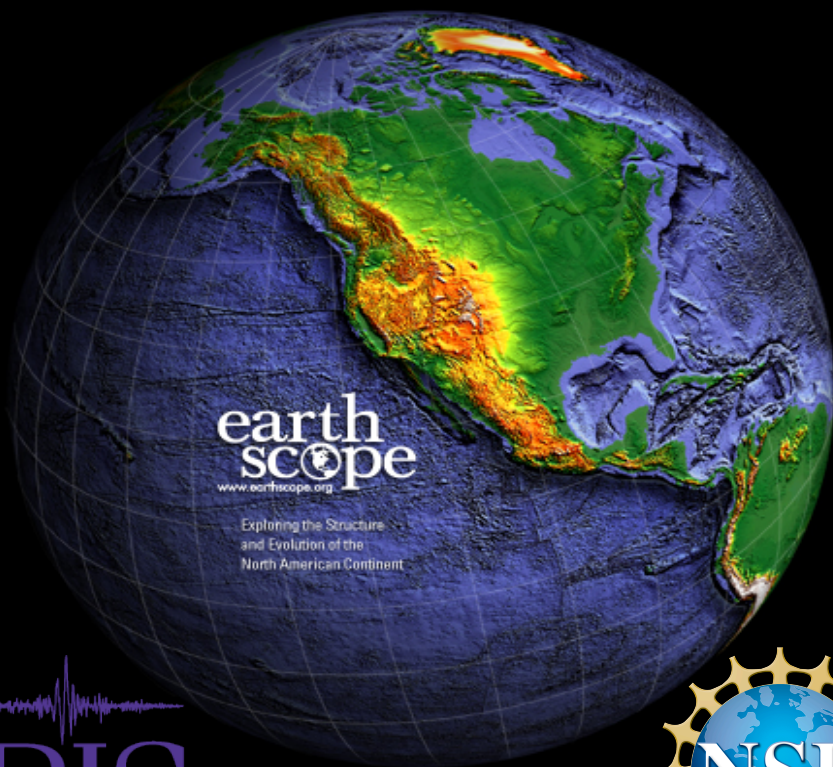
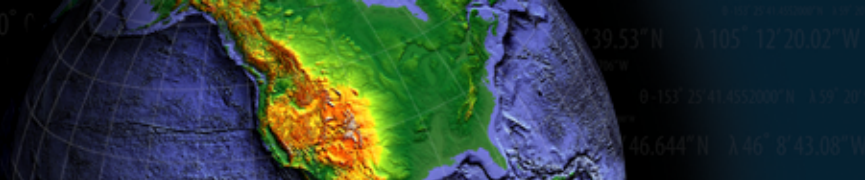


# EarthScope Transportable Array Observations in the Alaskan Arctic



May 30, 2018



A quick introduction to IRIS and EarthScope

A summary of the “as built” Alaska Transportable Array

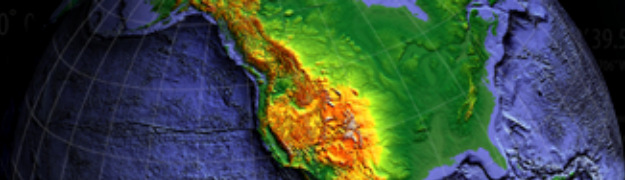
An introduction to diverse present and future ATA observations

A review of current activities and plans

An open session for participant presentations / discussion on observing interests, applications, and objectives

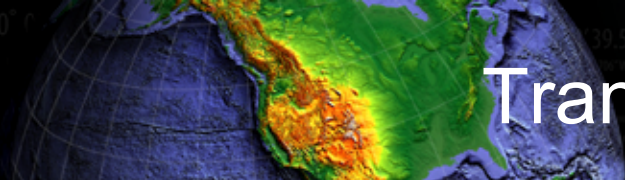
For maps, station locations, general description and other information, see:

[www.usarray.org/alaska](http://www.usarray.org/alaska)



# Caveats

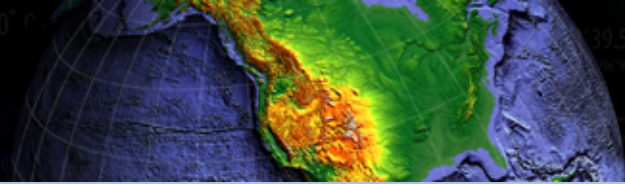
- IRIS can provide technical, cost, and schedule information.
- We have federal and non-federal participants here today.
- IRIS is not here to advise or coordinate. But we will gladly share our knowledge of all things Transportable Array.
- NSF is the sponsor of the Alaska Transportable Array and is happy to discuss future plans and options as appropriate.



# Transportable Array Background

- The Transportable Array in Alaska is one component of the NSF-funded EarthScope project
- EarthScope is in the 15<sup>th</sup> year of a 15 year effort to study the 4D structure and evolution of the North American continent
- During the first 10 years, the Transportable Array was focused on the lower 48
- During the 8 years FY14-FY21 the Transportable Array is focused on Alaska, with funding of ~\$7-8 M / y
- The Transportable Array is deployed and operated by the Incorporated Research Institutions for Seismology (IRIS)
- All data are fully open to the government, the research community and the public

- IRIS is a consortium devoted to education, facilitation, and collaboration in the geophysical sciences
  - 122 US Member Research Institutions
  - 22 Educational Affiliates
  - 126 Foreign Affiliates
- Non-Profit Corporation
  - Administrative, fiscal, and legal structure
  - ~\$30-35 M / year total budget
  - ~50 FTE + ~100 FTE in subaward/partners
- Facility Operator
  - Instrumentation Services
    - Global Seismographic Network
    - Portable Instrumentation
    - Transportable Array (part of EarthScope)
    - Polar Services
    - Ocean Bottom Seismograph Instrument Pool
  - Data Services
    - Data Archiving, Distribution and Products
  - Education and Public Outreach



# Want More Info?

## On the Web

- EarthScope  
[www.earthscope.org](http://www.earthscope.org)
- USArray  
[www.usarray.org](http://www.usarray.org)
- National Science Foundation  
[www.nsf.gov](http://www.nsf.gov)

**EarthScope** is funded by the National Science Foundation.

