



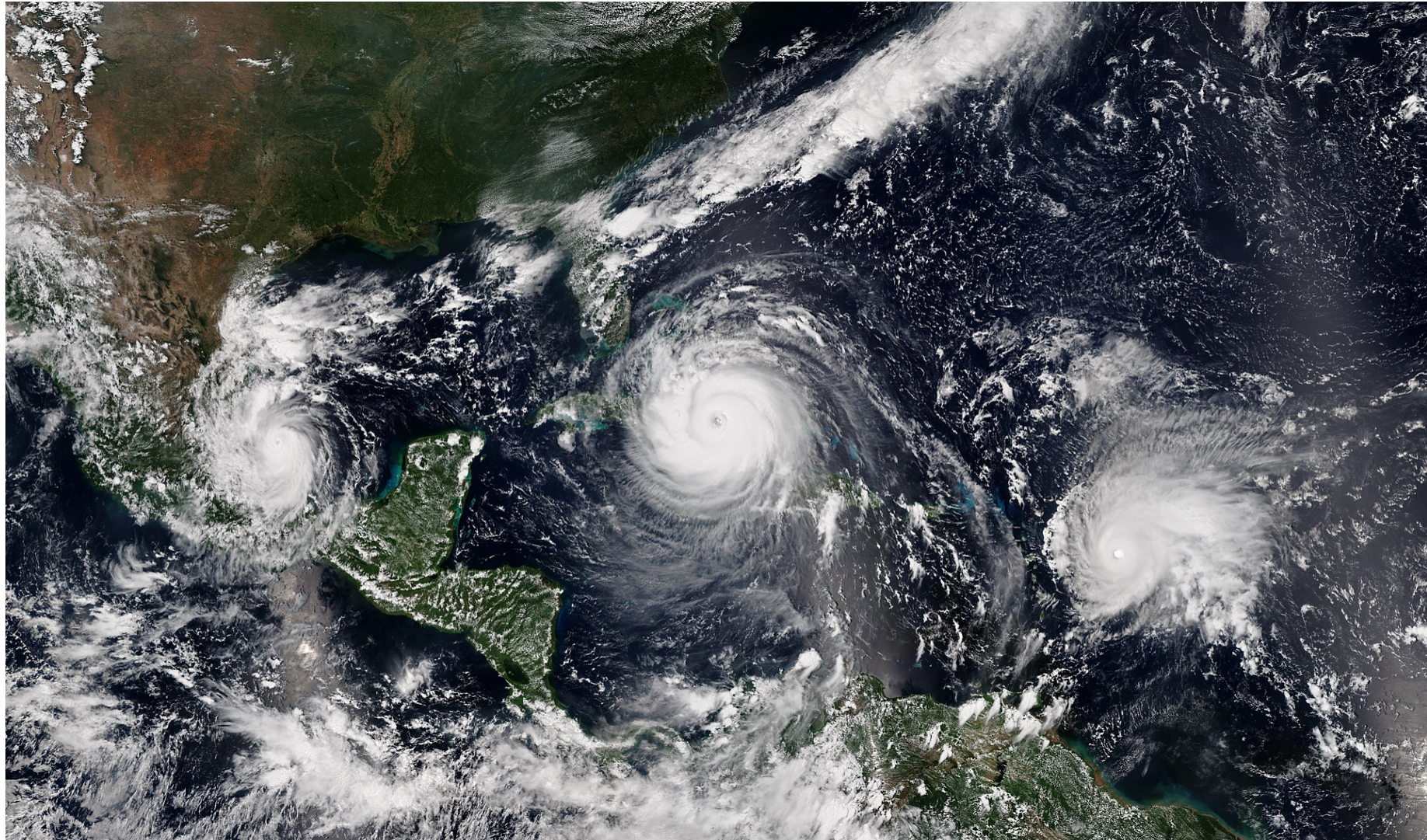
New Toys!

A Seismologist/User Perspective on Posthole Stations in PR

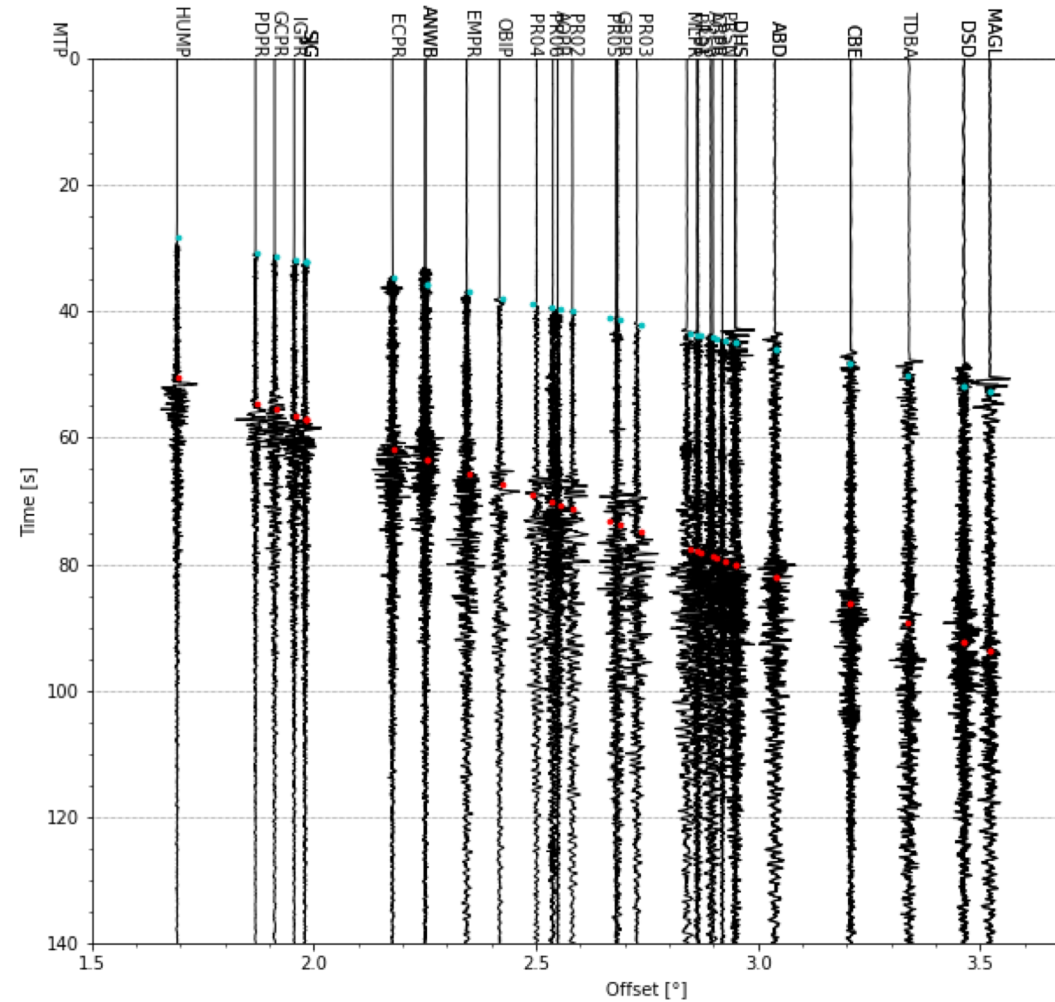
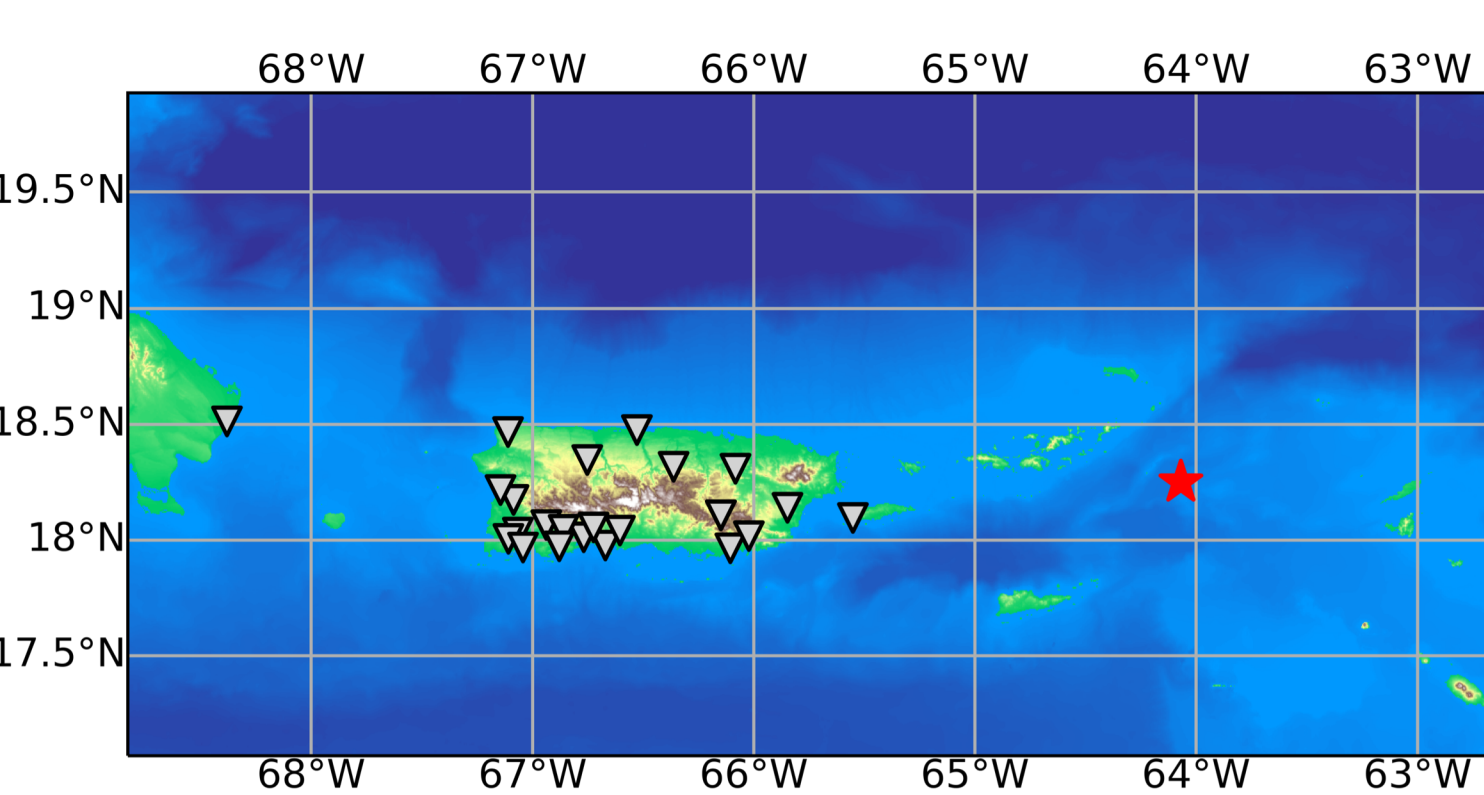


Elizabeth A. Vanacore
elizabeth.vanacore@upr.edu

Why is PR upgrading to PH? : Hurricanes Irma & Maria



PRSN Current Broadband Station Distribution



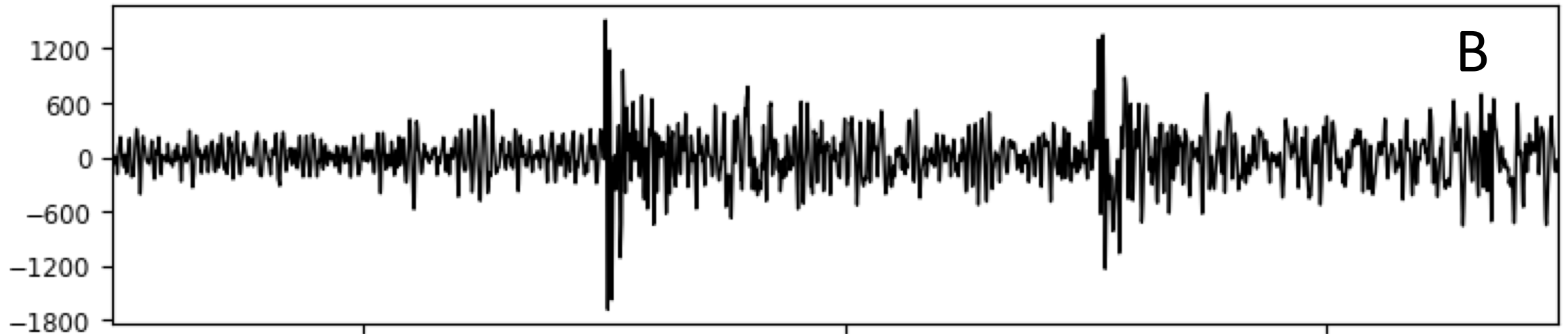
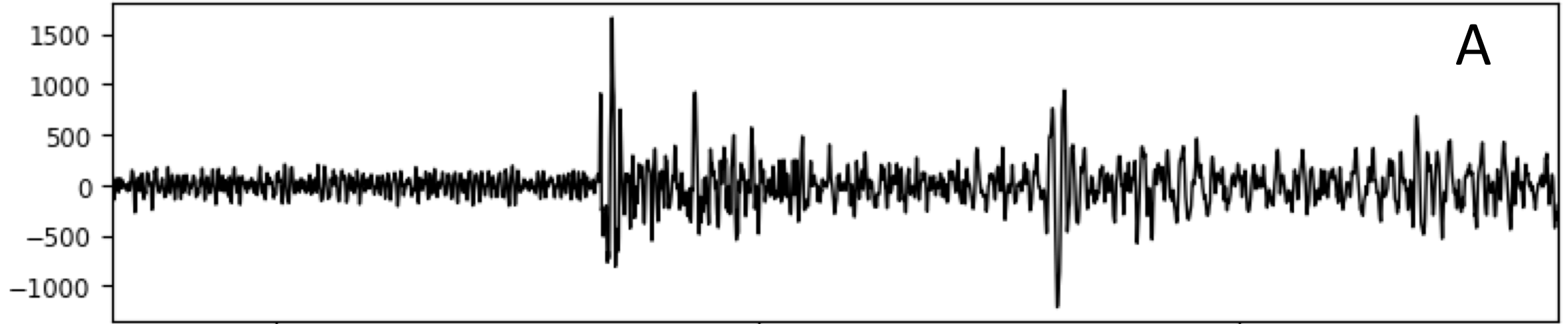
Vault vs Hurricane



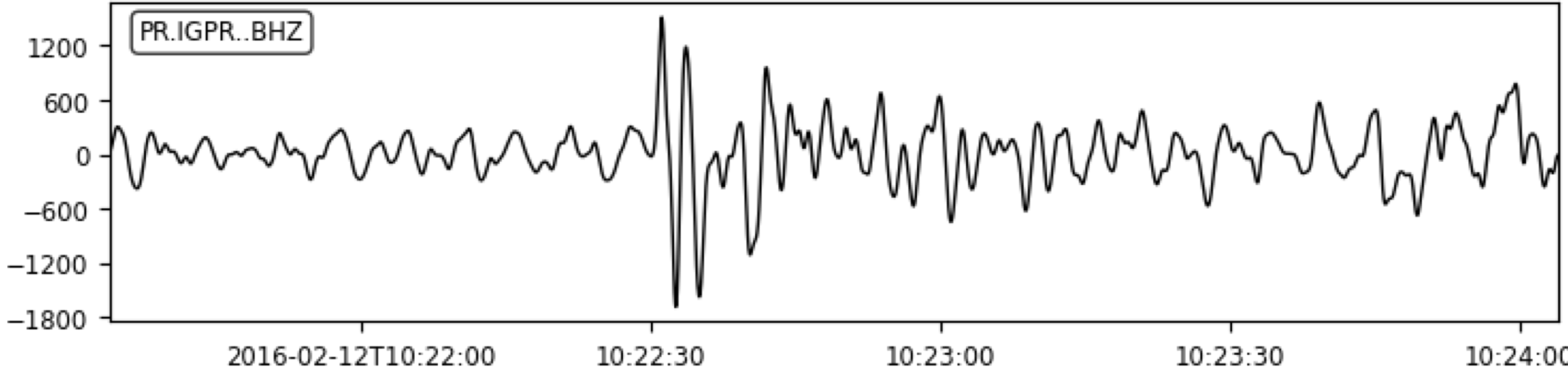
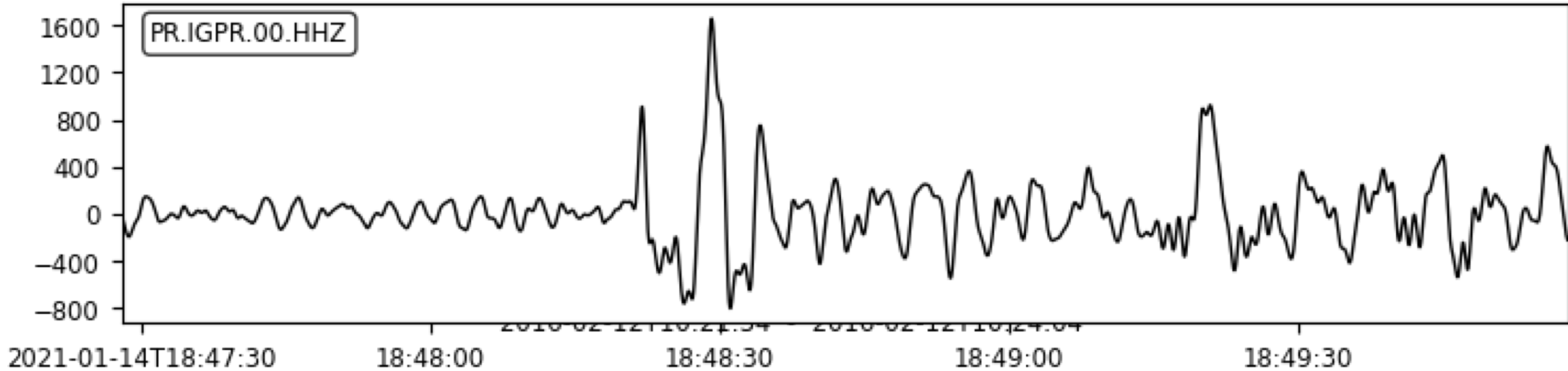
- Prior to PH many stations are installed in a 3m deep concrete vault.

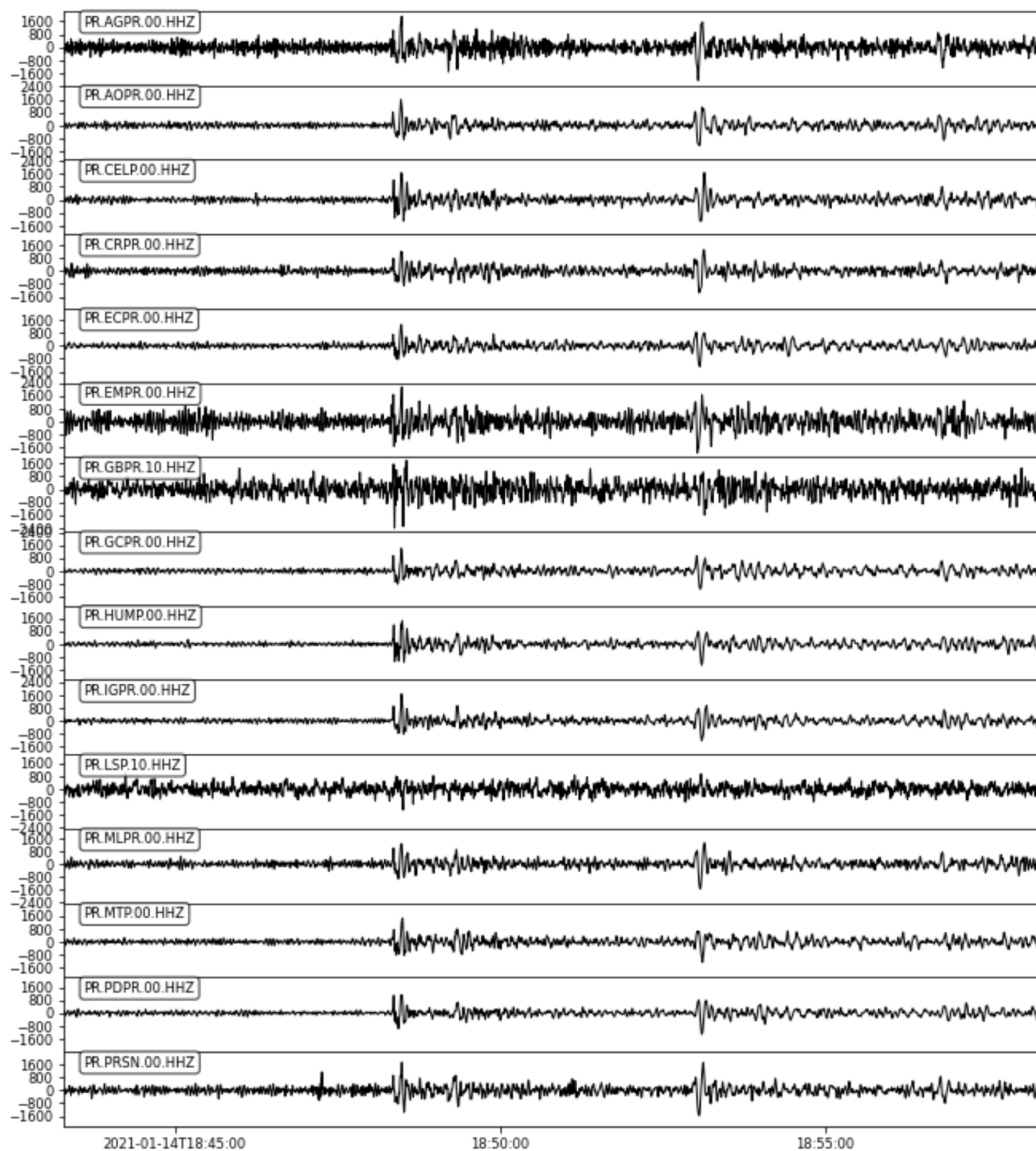


Which is the PostHole?

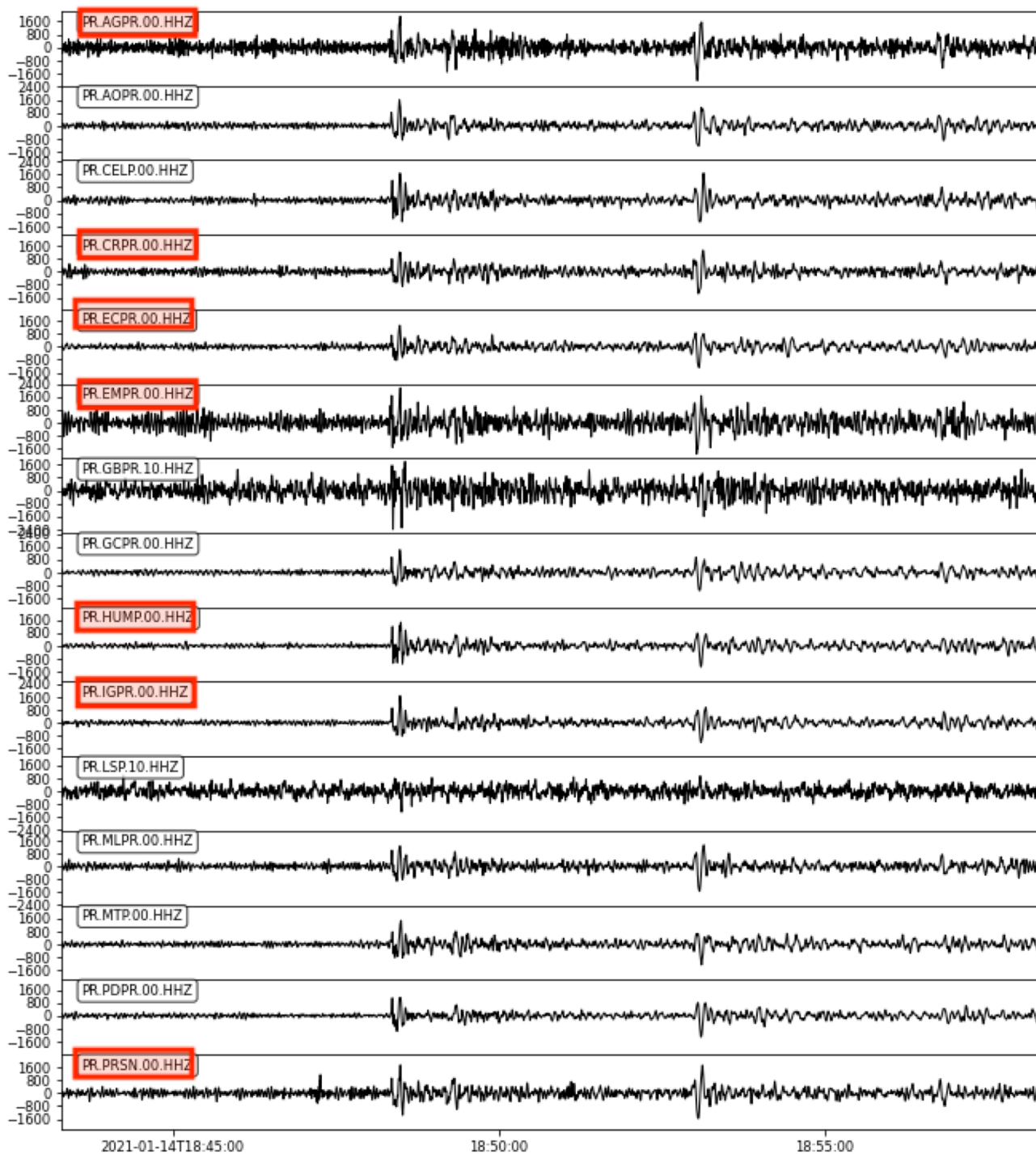


A Closer Look





A Mixed Network:
Which Are the PH
Stations?



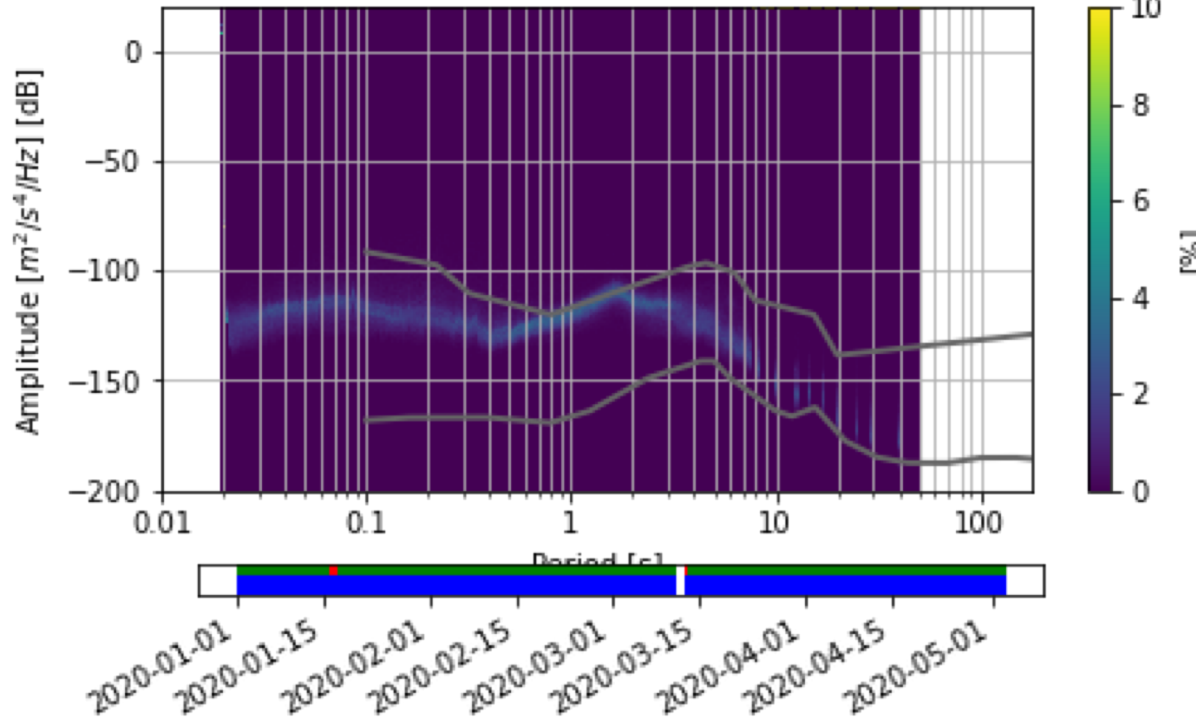
A Mixed Network: Which Are the PH Stations?

- PHs can improve noise, but won't fix a noisy site!
- Not all sites are conducive to PH installation.

Postholes and PSDs

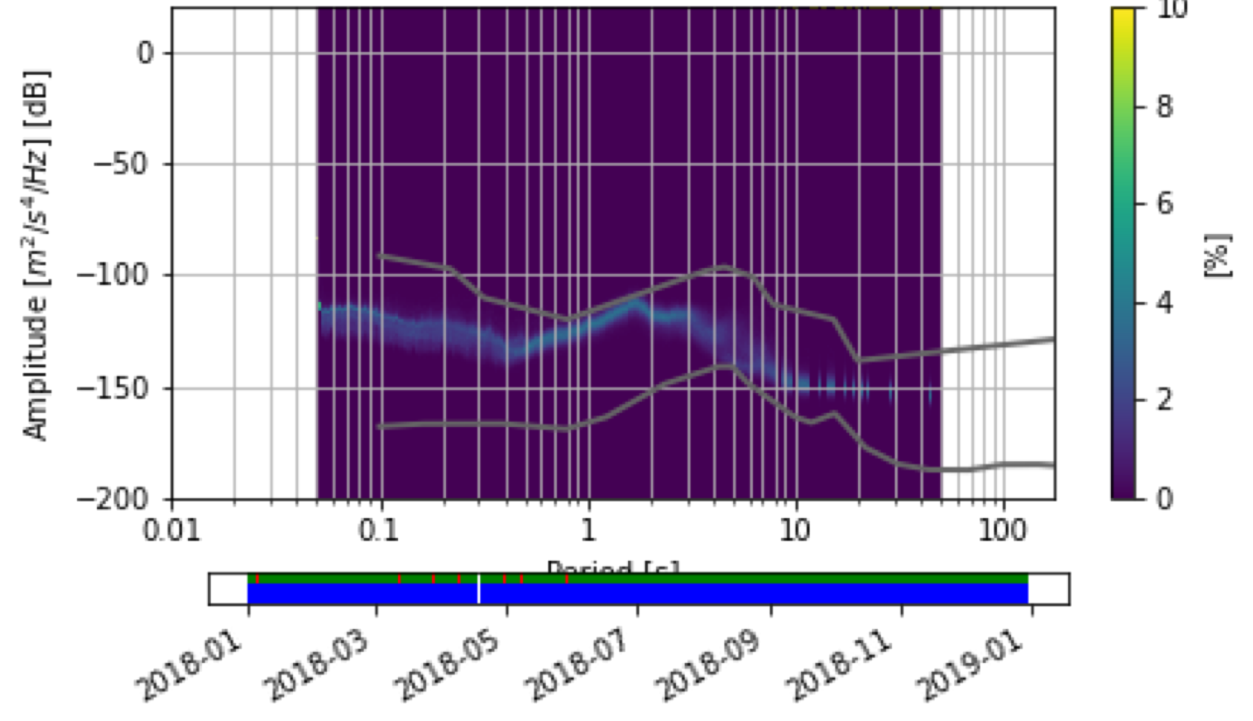
Posthole PSD

PR.AGPR.00.HHZ 2019-12-31 -- 2020-05-02 (11711/11711 segments)



Vault PSD

PR.AGPR..BHZ 2017-12-31 -- 2018-12-30 (34752/34752 segments)



A Couple of Takeaways

- Disaster can be the seed of innovation
- In Ocean Islands PH do improve signals for teleseismic earthquakes
- A Posthole will not “fix” a noisy site but may improve the quality of the data; the site is still the dominant factor.