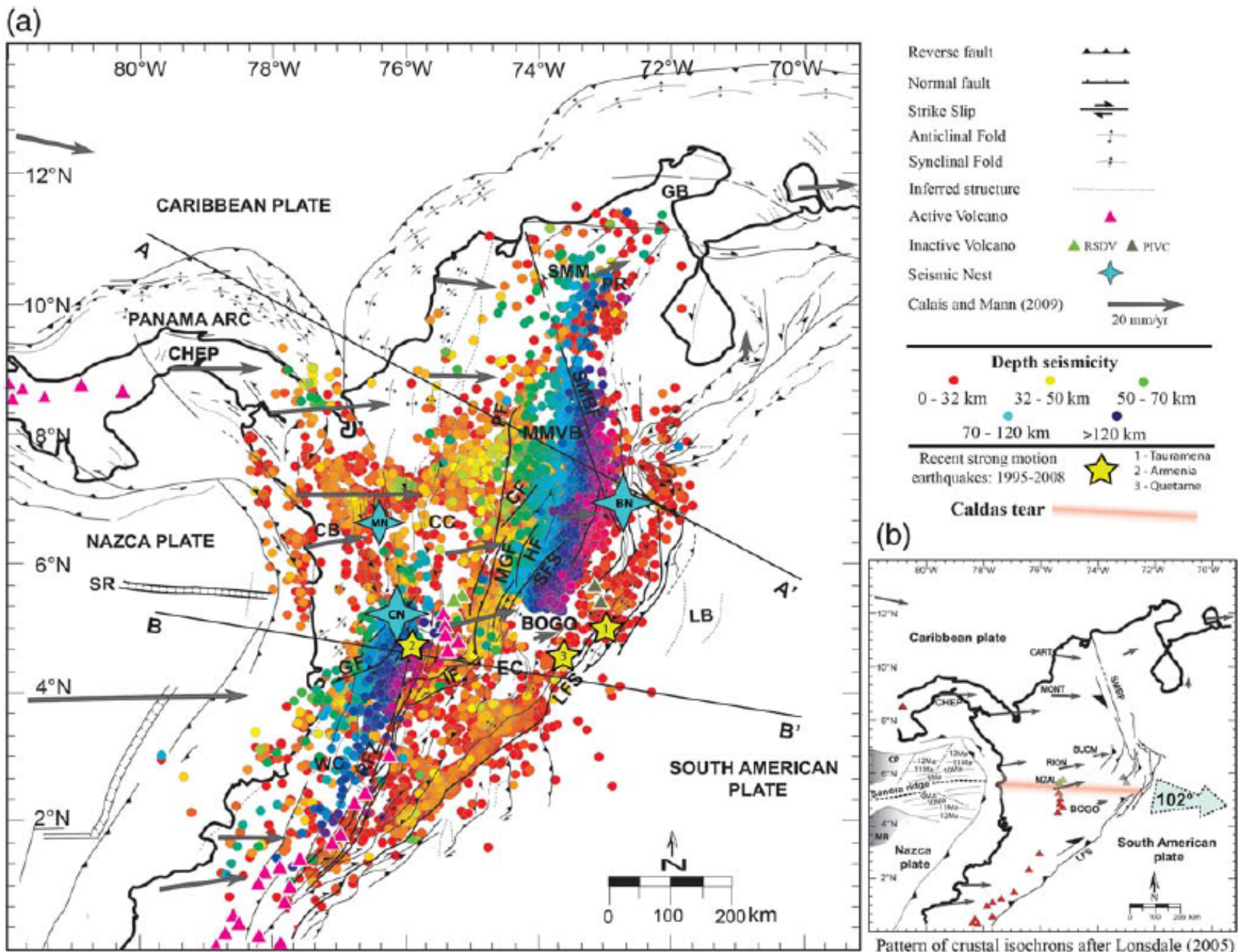


*From tectonic to anthropogenic seismic activity in
Colombia: the role of the complementarity and
international cooperation*

Carlos A. Vargas J.
Departamento de Geociencias
Universidad Nacional de Colombia

Santiago, May 27th, 2015



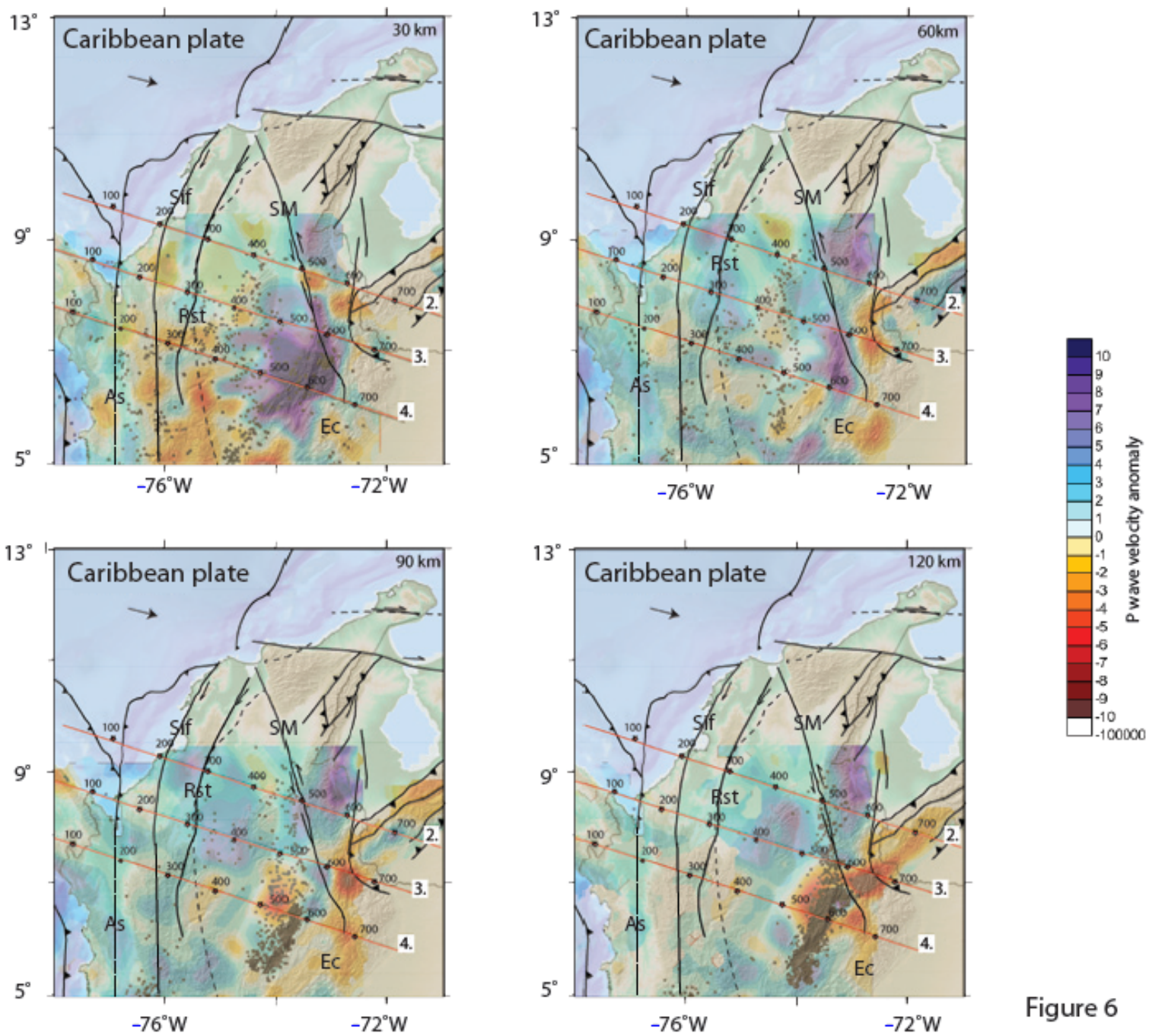
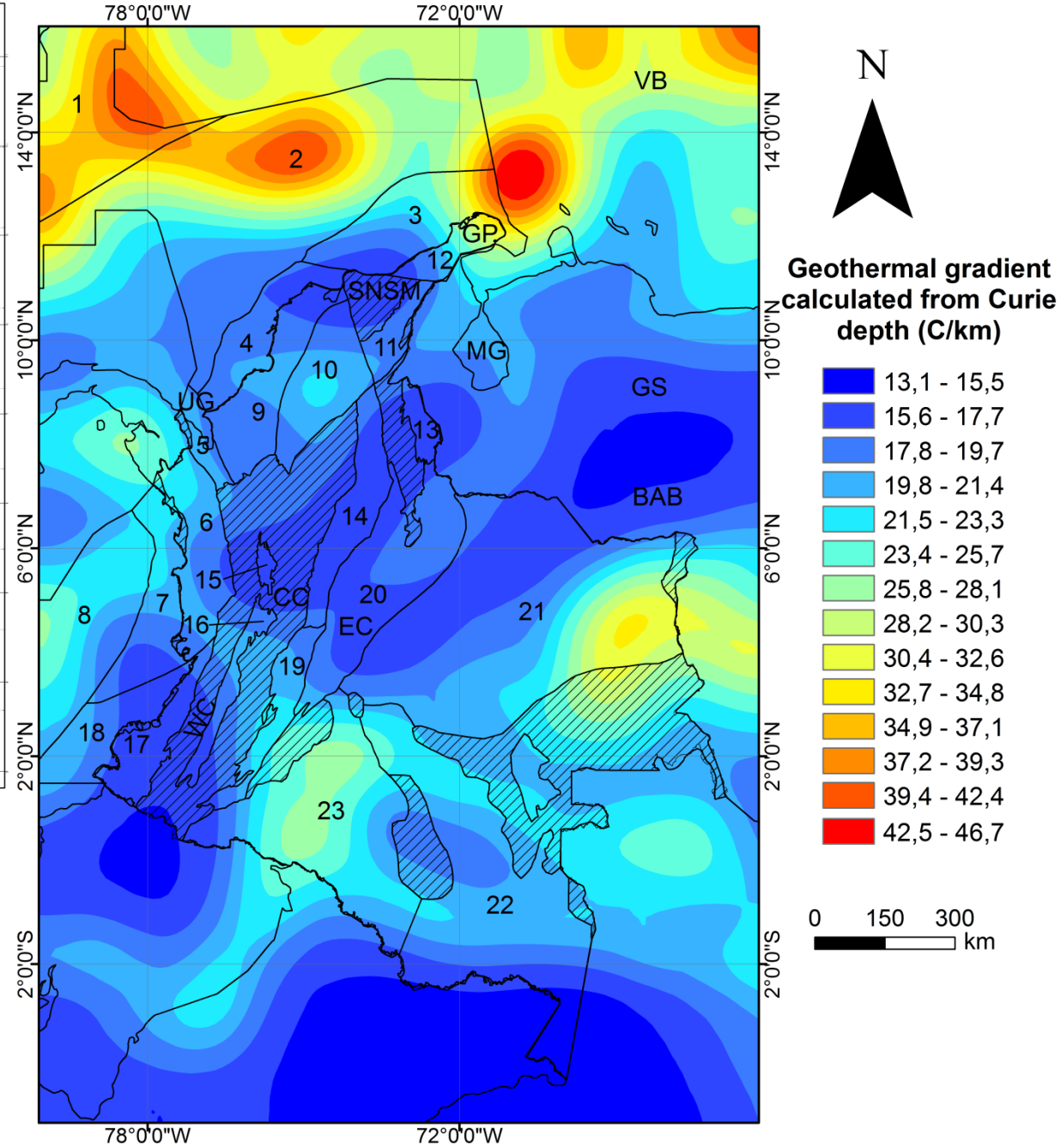
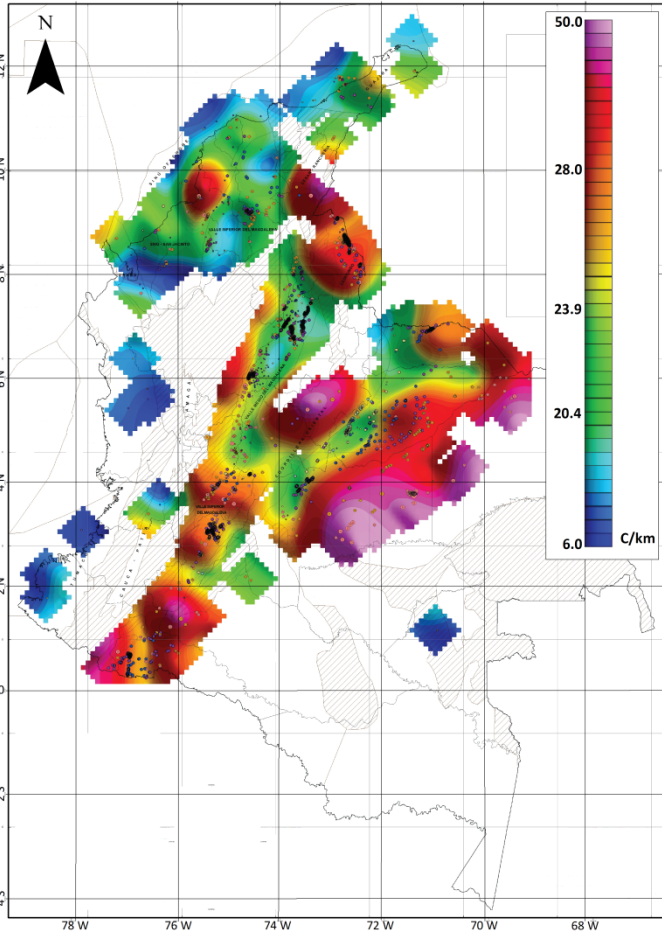
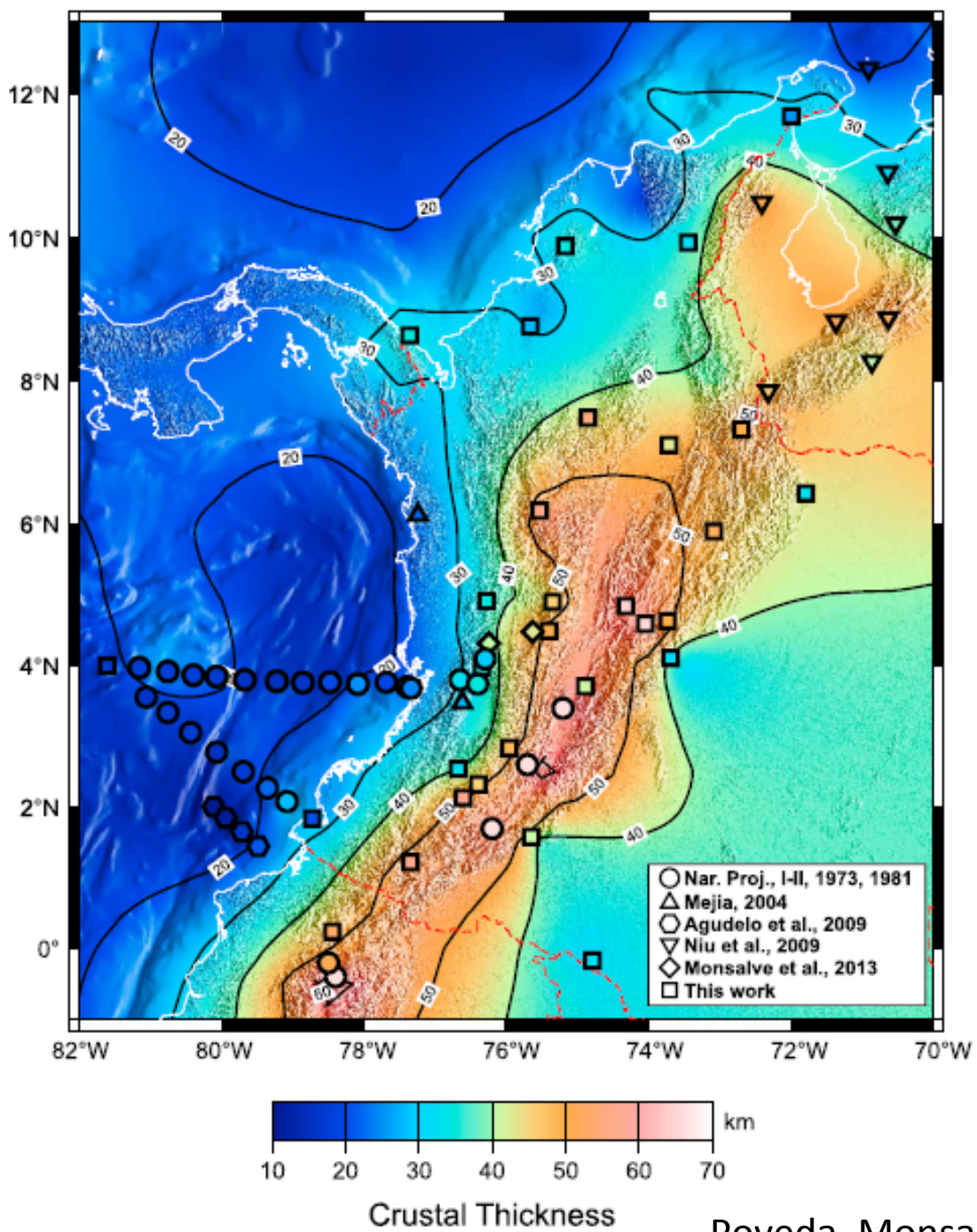
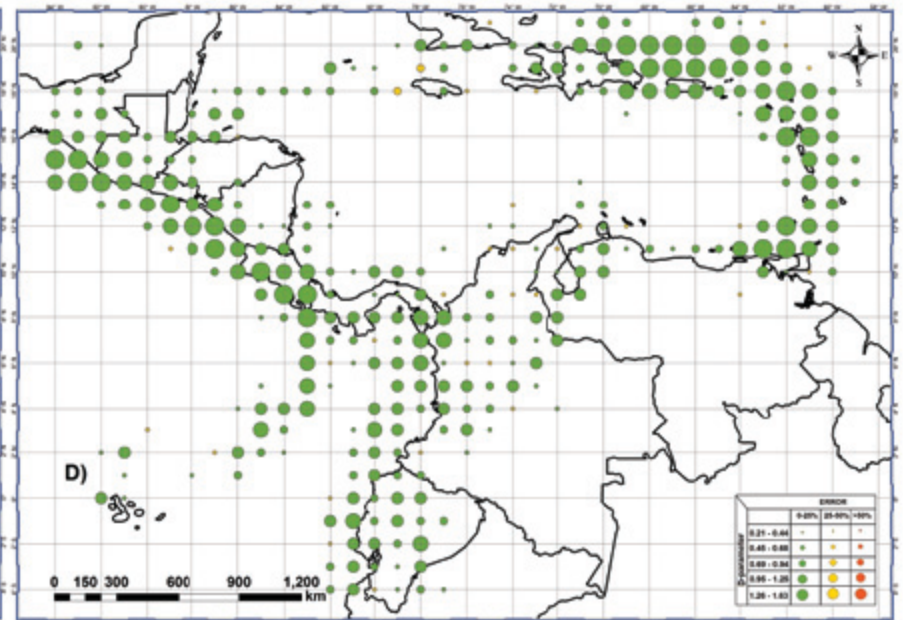
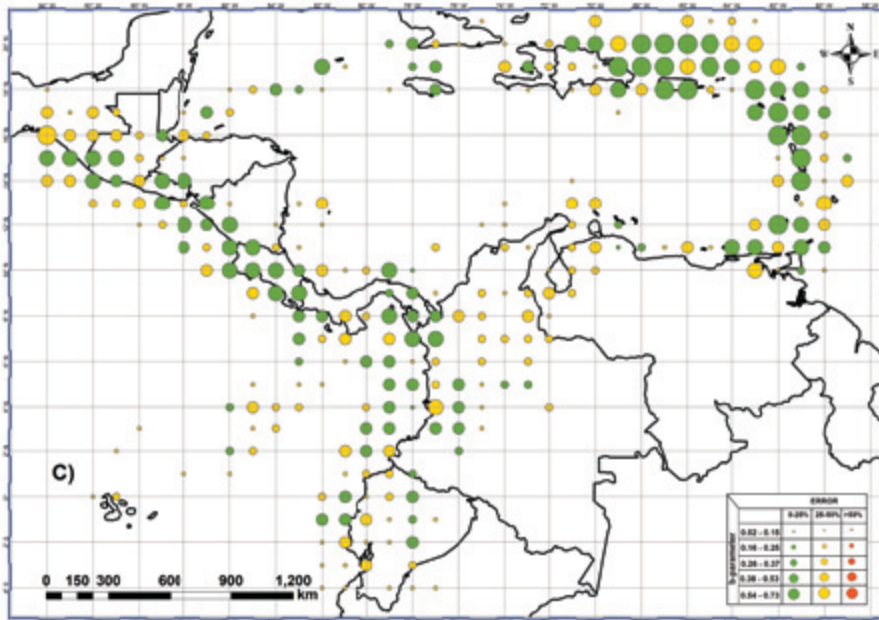
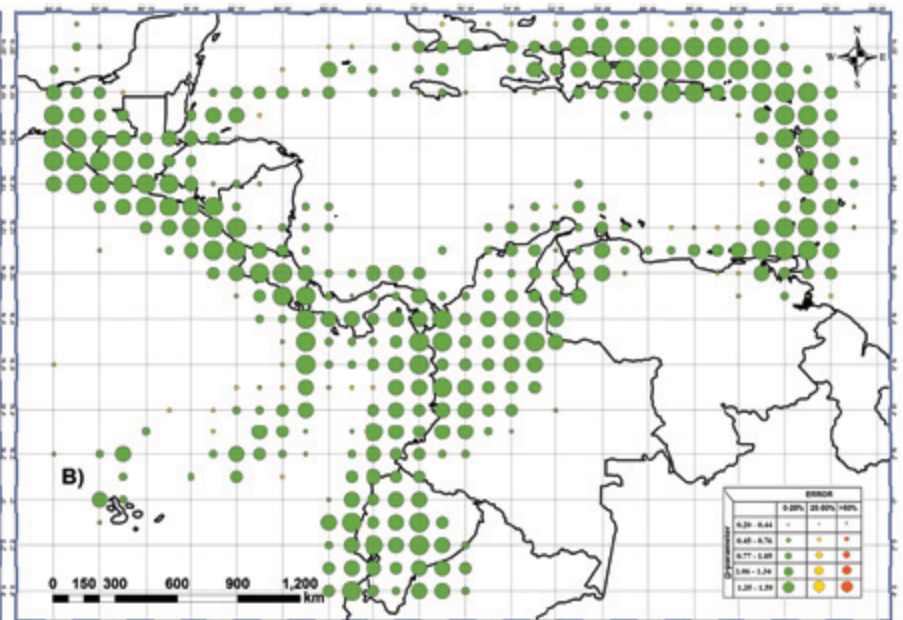
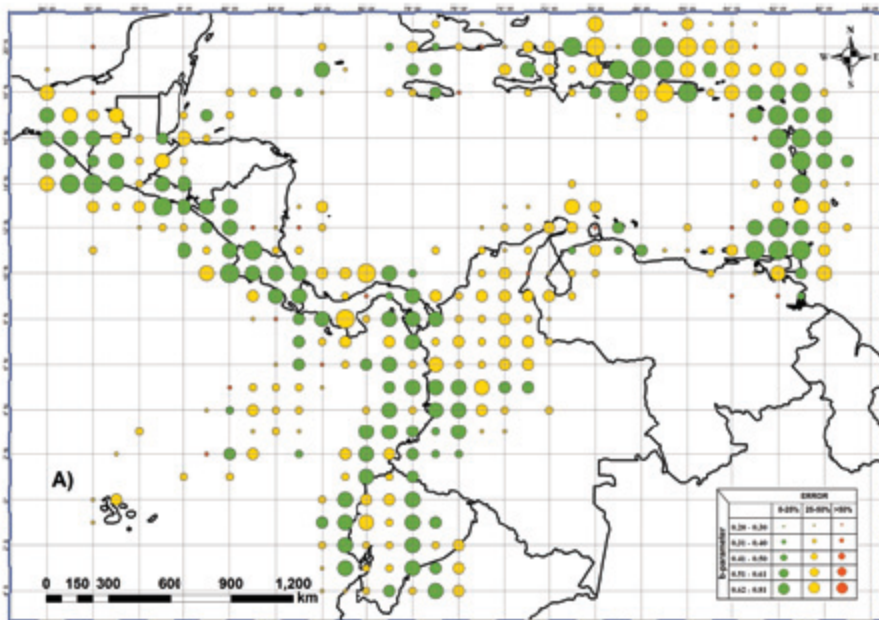


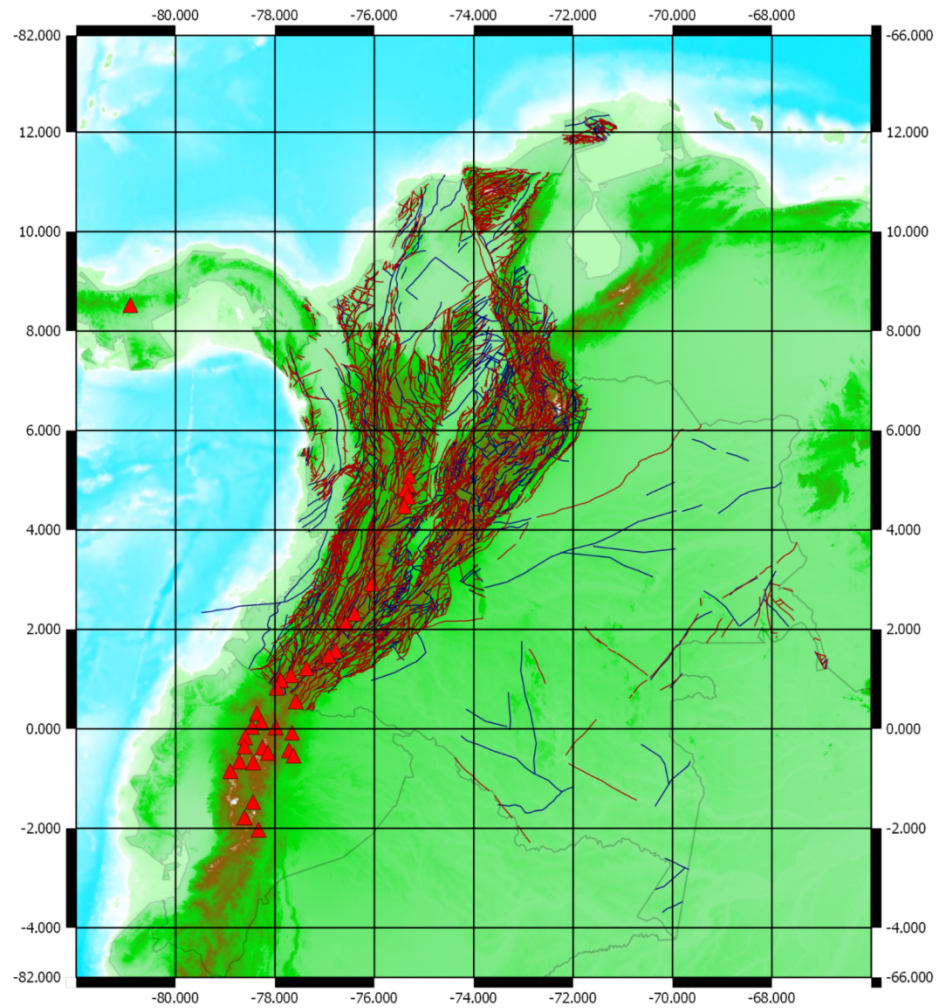
Figure 6



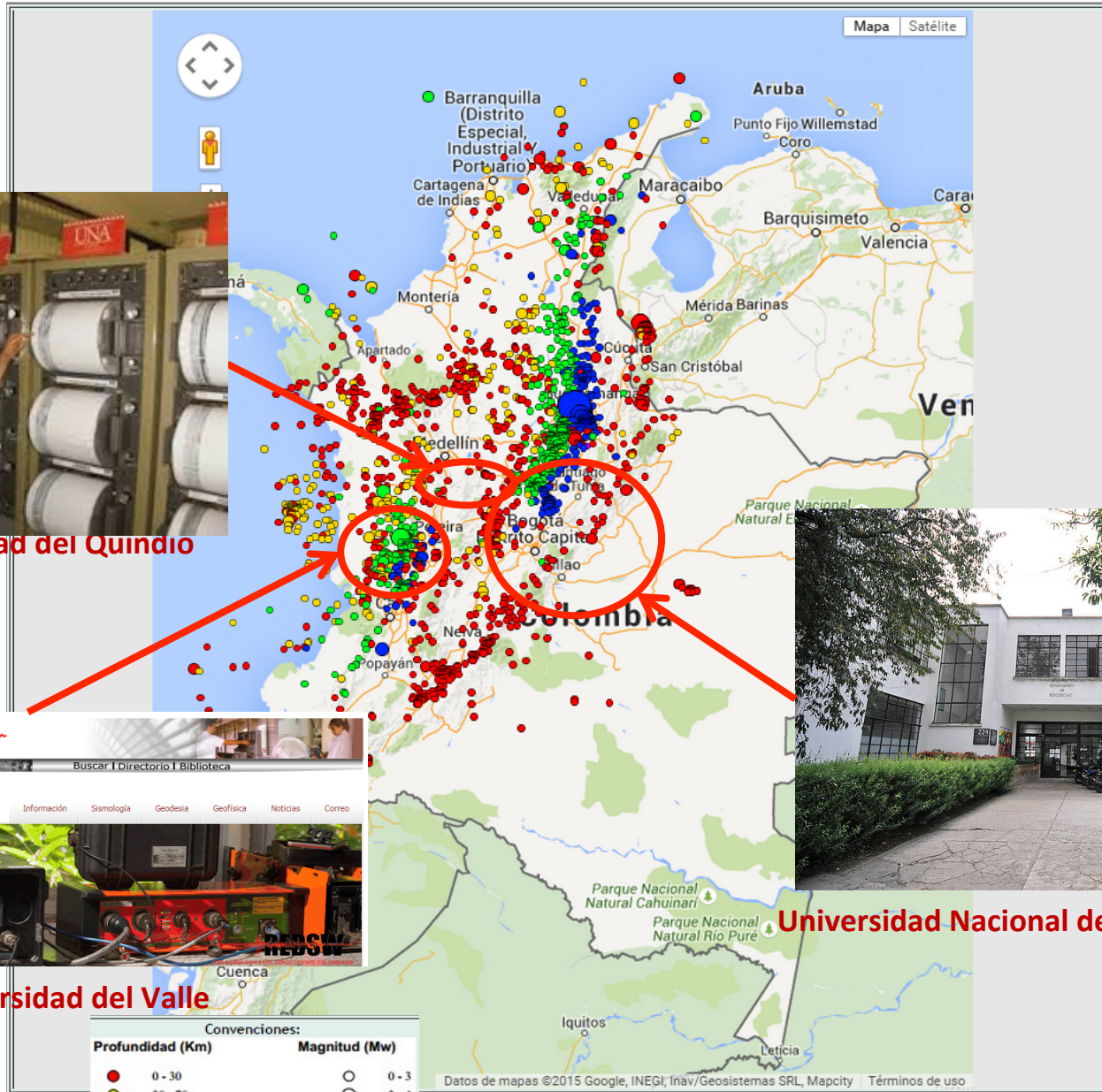




Local realities



Seismicity recorded by the NSNC – Jan 11 / Mar 21, 2015



Universidad del Quindío



Universidad Nacional de Colombia at Bogotá



Universidad del Valle

Observatorio Sismológico y Geofísico del Suroccidente Colombiano - OSSO
Hacia una Proyección Social

Cal - Colombia

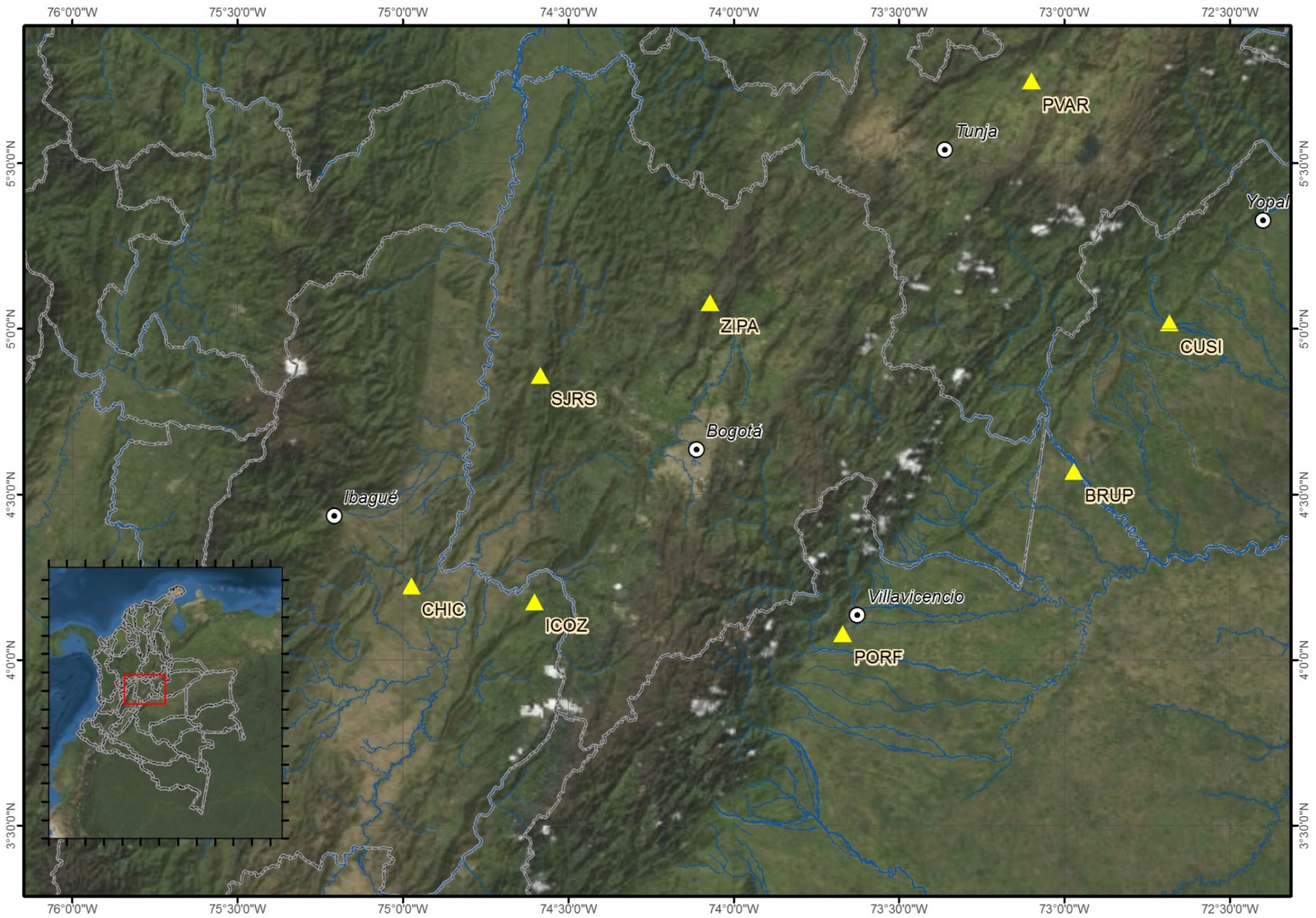
Buscar | Directorio | Biblioteca

Facultades y dependencias / Departamento de Geografía

OSSO

Información | Sismología | Geodesia | Geofísica | Noticias | Correo

- Inicio
- Equipo Técnico
- Mapa de estaciones
- Sismograma en línea
- Contacto

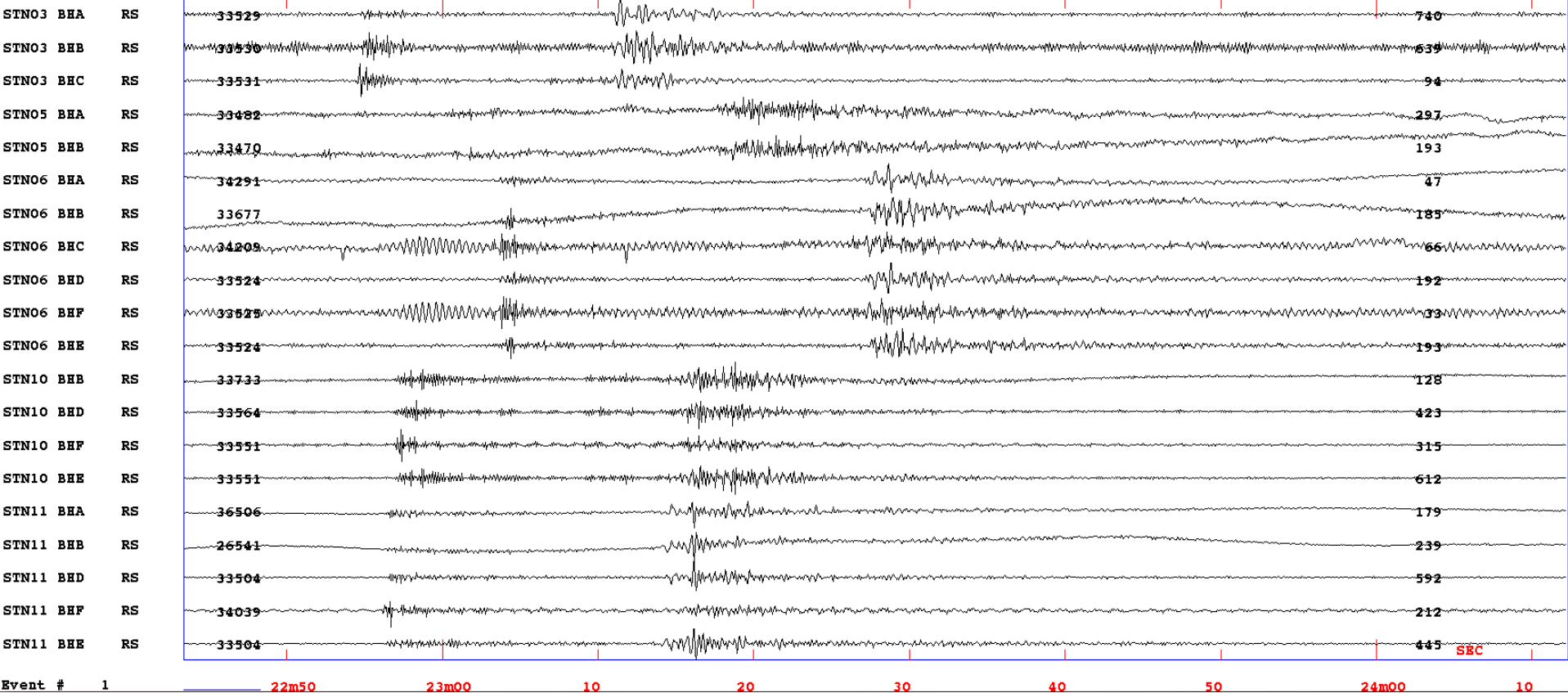


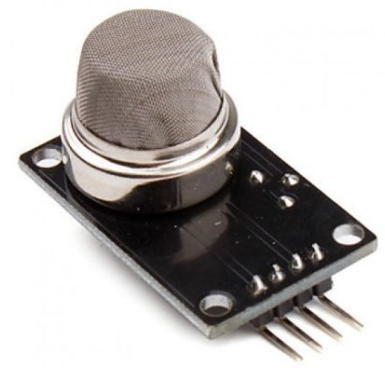
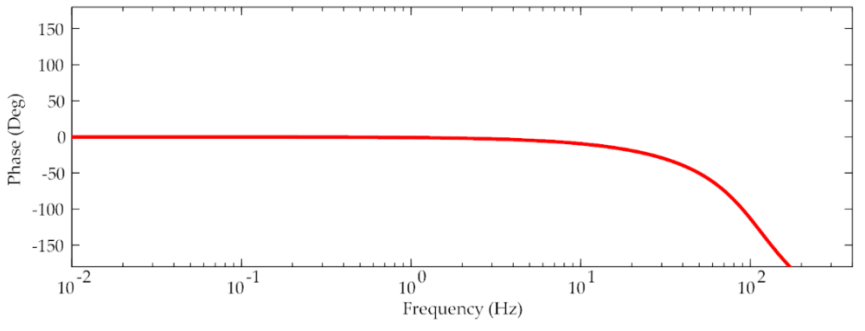
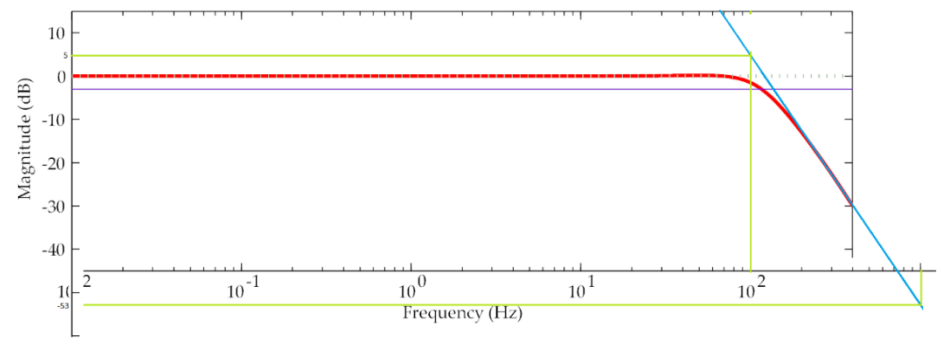
2014-08-14-1220-00M.BT__024

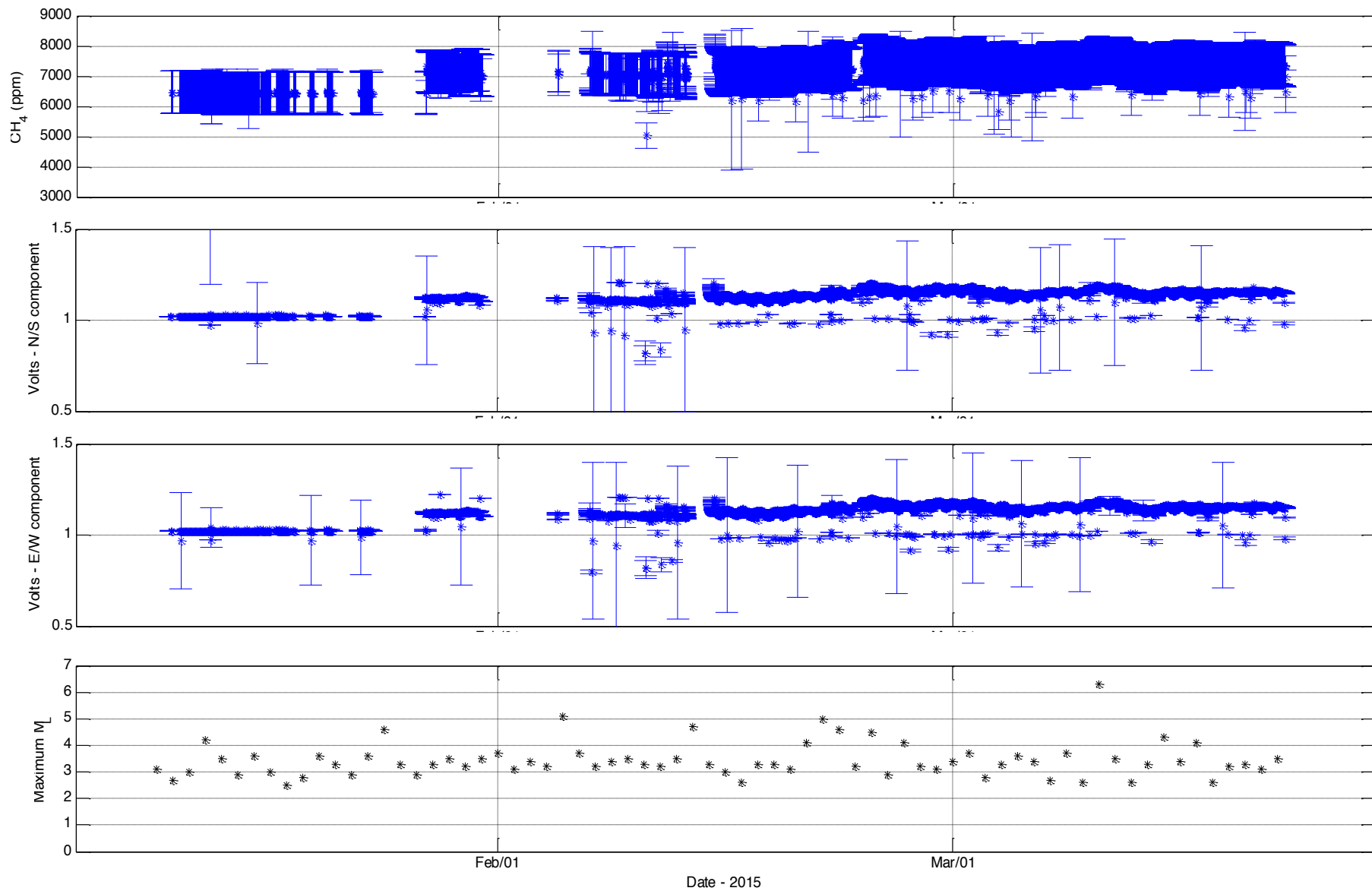
MENU

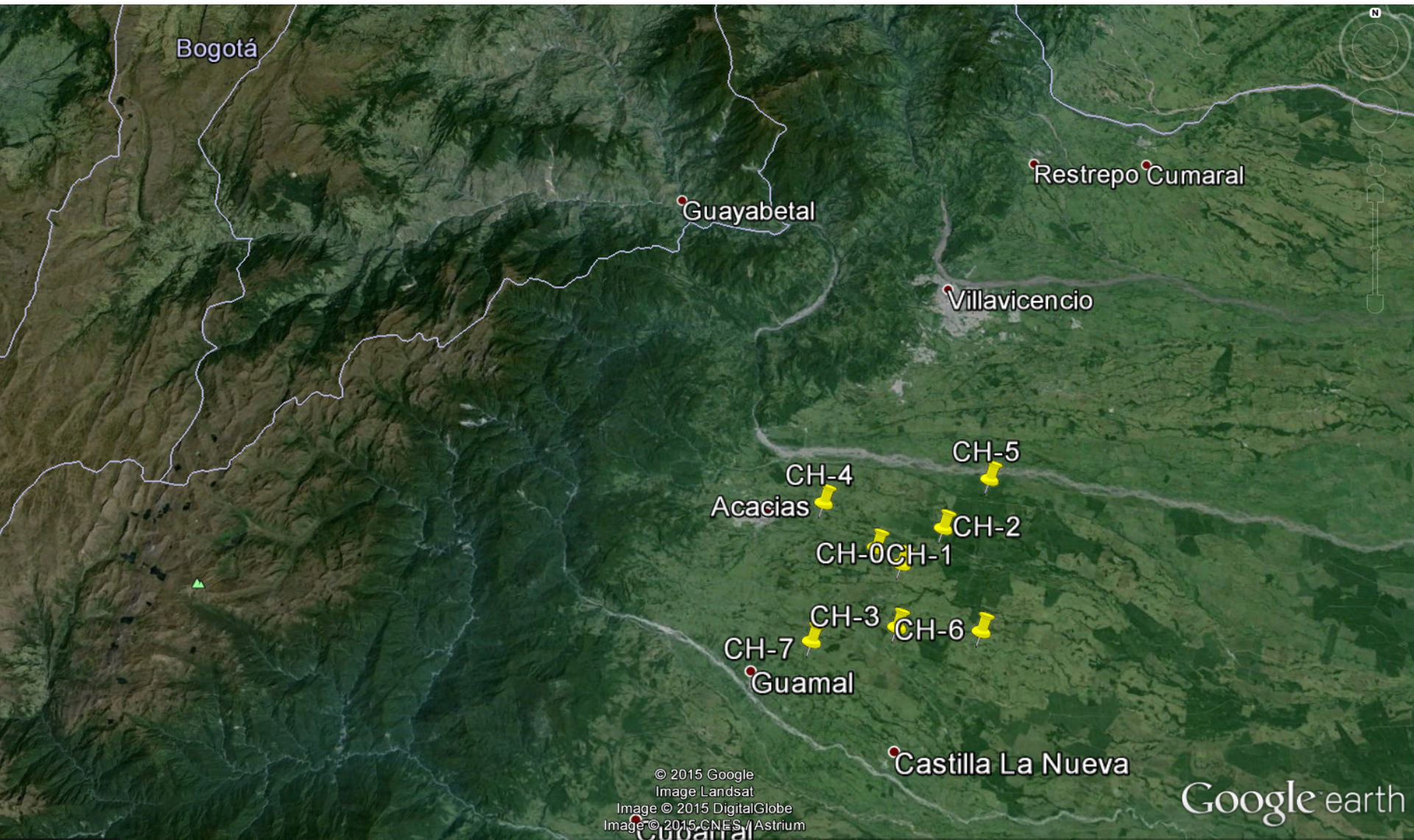
2014 814 1220 0.2 L

Plot start time: 2014 8 14 12:22 43.385









Bogotá

Guayabetal

Restrepo Cumaral

Villavicencio

CH-4
Acacias
CH-5
CH-2
CH-0 CH-1
CH-3 CH-6
CH-7
Guamal

Castilla La Nueva

© 2015 Google
Image Landsat
Image © 2015 DigitalGlobe
Image © 2015 CNES, Astrium

Google earth

Conclusions

- We need to work together, with transnational views and efforts.
- Science without borders encourage us to integrate data, motivations and problems!!
- Thanks!