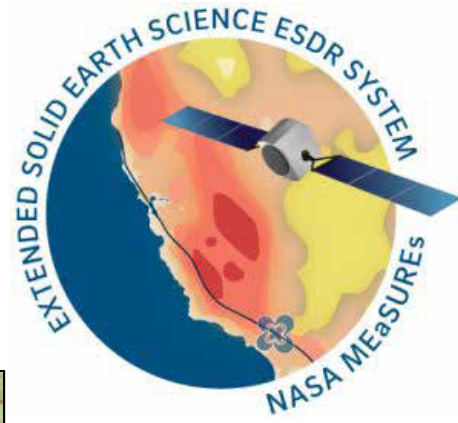
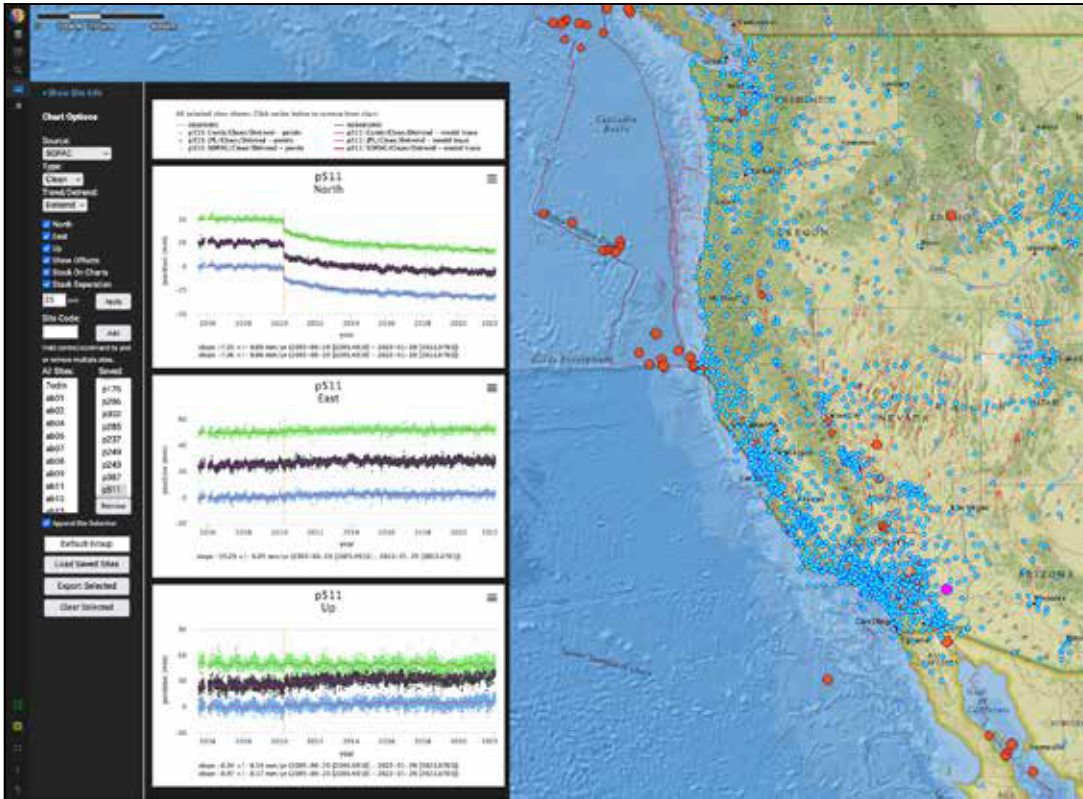


# SIO/JPL NASA MEaSUREs, ES<sup>3</sup> Project Product Updates, May 2022

(<http://sopac-csrc.ucsd.edu/index.php/measures-2/>)



Introducing MGviz, our new GNSS data visualization platform | Visit: <http://MGViz.ucsd.edu/>



## Features:

- + View and interact with daily JPL, SOPAC or Combined displacement time series for over 3200 North America and global stations
- + View velocity vectors
- + View station metadata
- + View locations of nearby earthquakes
- + Choose various output and display functions

## We currently provide eight Earth Science Data Records (ESDRs):

Visit: <http://sopac-csrc.ucsd.edu/index.php/products/>

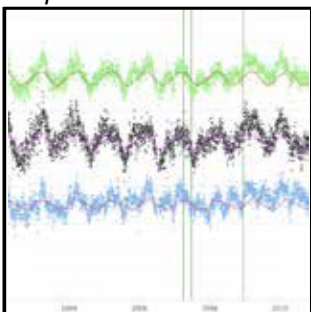
### Updated Weekly:

- + Quality-controlled Daily Displacement Time Series with option for outliers & non-tectonic offsets/artifacts corrected
- + Velocity and Coseismic Estimates
- + 3D Displacement & Horizontal Strain Rate Grids for California, Nevada, & Cascadia

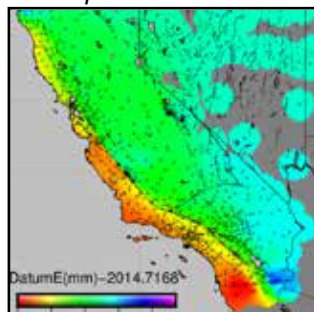
### Derived Products:

- + Modeled Cascadia ETS Transient Events
- + Water Storage Estimates for Western U.S.
- + 5-min Tropospheric Delay & Precipitable Water Estimates
- + 100Hz Seismogeodetic & 1Hz GNSS waveforms for historical earthquakes

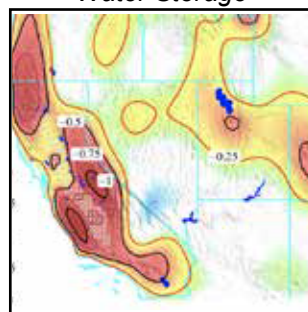
Displacement Time Series



Displacement Grids



Water Storage



ETS Transients

