

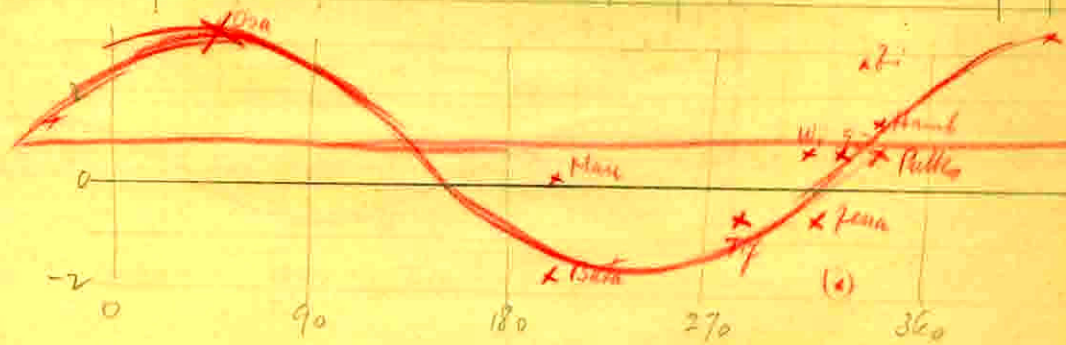
1909 April 14 14:53
 MSL 23 N 125 E

60	June P2	5 5	.3 6.9	7.2	6.9	6.8	6.8	7.0
	23 MP2	4 5	2.71	7.3				7.1
	S	6 6	12.70	7.2				7.2
	Simple P	4 10	-1.73	7.2				6.9
	87 S	4 16	-1.64	6.5				6.4
35	90% P	5 4	.3 7.2	7.5	6.8	30	Osaka	6.1
	85 MP	4 6	.173	7.4				7.3
45	Wien S	3 8	.5 7.0	7.5	6.7	30	Belst/Sec	7.5
50	Mps P	3-5	-3.72	6.9				6.6
	7 S	14-8	.1 6.9	7.0				7.0

1934 Apr. 13 25.7 N 124.8 E

-514 740 434

	P	S-P	P-O	O	P-O	S	
June	83.6 320	6:00	10:16	12:29	53:31	72:26	83.2
Osaka	82.4 310	6:26				65.76	34.8
Hamburg	82.3 328	6:06				12:26	84.7
St. Petersburg	86.3 323	6:06				12:26	84.7
St. Francis	6.2 333	55:49	1:46	2:15	13:24	2:09	9.1
Gull	84.1 320	6:08				12:26	84.8
Osaka	12.8 43	57:24	2:00	2:13	—	3:44	16.1
Tiflis	46.1 290	4:18	8:33	10:40	53:38	10:38	65.5
Wien	82.3 321	5:57				12:14	83.0
Mantla	11.7 199	5:26	2:25			2:46	11.8
Mps		5:26	9:30	11:44	53:42	11:46	76.9
Pulkoo	70.1 335	4:52				11:12	70.9



19153.7
 24 N 123 E # 136 h
 h = 80 ±
 M = 7.3
 CCC

00805